

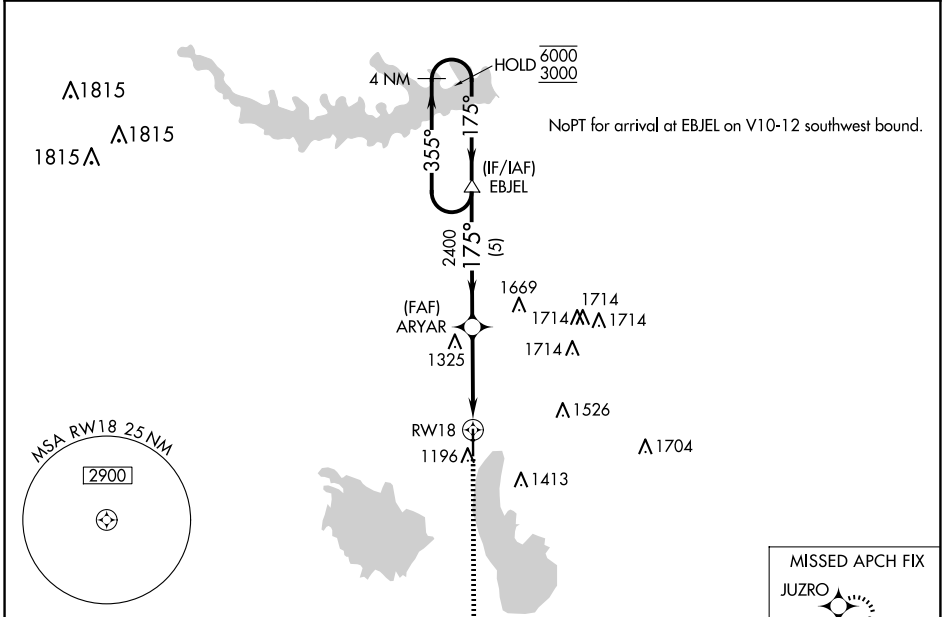
WAAS CH 66021 W18A	APP CRS 175°	Rwy Idg 5500 TDZE 1174 Apt Elev 1174
--	------------------------	---

RNAV (GPS) RWY 18

COFFEY COUNTY (UKL)

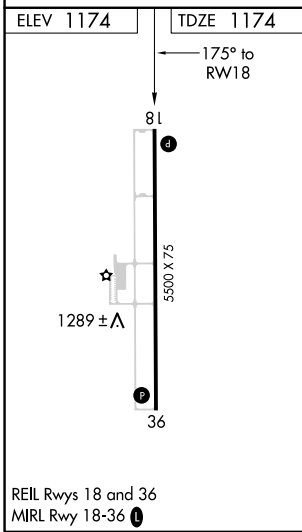
RNP APCH-GPS.		MISSED APPROACH: Climb to 3000 direct JUZRO and hold.
<p>⚠ For uncompensated Baro-VNAV systems, LNAV/VNAV NA below -17°C or above 54°C.</p>		

AWOS-3PT 121.125	KANSAS CITY CENTER 127.725 270.25	UNICOM 123.0 (CTAF) 0
----------------------------	---	---------------------------------



NC-2, 20 FEB 2025 to 20 MAR 2025

NC-2, 20 FEB 2025 to 20 MAR 2025



4 NM Holding Pattern		EBJEL		ARYAR		1.2 NM to RWY 18	
6000 ← 355°		3000 → 175°		2400 ↘ 175°		RWY 18	
GP 3.00°		TCH 40		2400		1.2 NM	
5 NM		2.5 NM		1.2 NM			

CATEGORY	A	B	C	D
LPV DA	1424-1 250 (300-1)			NA
LNAV/VNAV DA	1424-1 250 (300-1)			NA
LNAV MDA	1580-1	406 (500-1)	1580-1 1/8 406 (500-1 1/8)	NA
C CIRCLING	1580-1 406 (500-1)	1640-1 466 (500-1)	1920-2 1/4 746 (800-2 1/4)	NA