

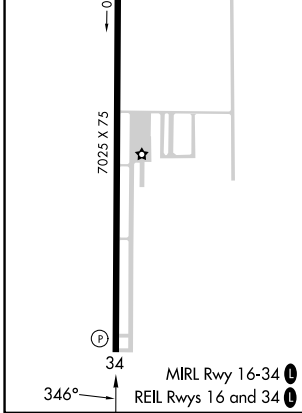
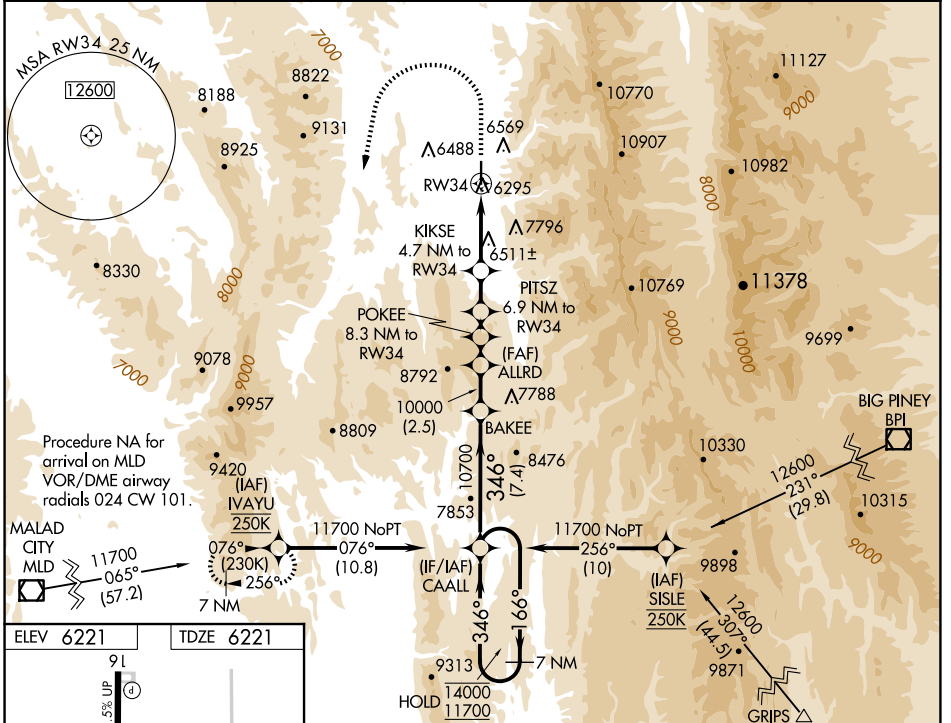
APP CRS 346°	Rwy Idg TDZE Apt Elev	7025 6221 6221
------------------------	-----------------------------	---

RNAV (GPS) RWY 34

AFTON LINCOLN COUNTY/GENERAL BOYD L EDDINS FLD (AFO)

<p>RNP APCH - GPS.</p> <p>⚠ Circling NA east of Rwy 16-34. Procedure NA at night.</p> <p>⚠ NA Rwy 34 helicopter visibility reduction below 1 SM NA.</p> <p>❄ -18°C When Afton altimeter setting not received, procedure NA.</p>	<p>MISSED APPROACH: (Do not exceed 200K until IVAYU) Climb to 8080 then climbing left turn to 11700 direct IVAYU and hold.</p> <p>*Missed approach requires minimum climb of 364 feet per NM to 8900.</p>
---	--

<p>AWOS-3P 119.025</p>	<p>SALT LAKE CENTER 128.35 239.25</p>	<p>UNICOM 122.8 (CTAF) ①</p>
-----------------------------------	--	--



VGSI and descent angles not coincident (VGSI Angle 3.50/TCH 52).

	CAALL	BAKEE	ALLRD	POKEE	PITSZ	KIKSE
7 NM Holding Pattern				8.3 NM to RWY34	6.9 NM to RWY34	4.7 NM to RWY34
	14000 ← 166°	346° → 10700	10000	9420	8900	8060
				3.60° TCH 45		
	-7.4 NM	-2.5 NM	-1.5 NM	1.4 NM	-2.2 NM	-4.7 NM

CATEGORY	A	B	C	D
RNAV MDA*	7520-1¼ 1299 (1300-1¼)	7520-1½ 1299 (1300-1½)	7520-3 1299 (1300-3)	NA
RNAV MDA	7800-1¼ 1579 (1600-1¼)	7800-1½ 1579 (1600-1½)	7800-3 1579 (1600-3)	NA
ⓐ CIRCLING	7800-1¼ 1579 (1600-1¼)	7800-1½ 1579 (1600-1½)	7800-3 1579 (1600-3)	NA

NW-1, 20 FEB 2025 to 20 MAR 2025

NW-1, 20 FEB 2025 to 20 MAR 2025