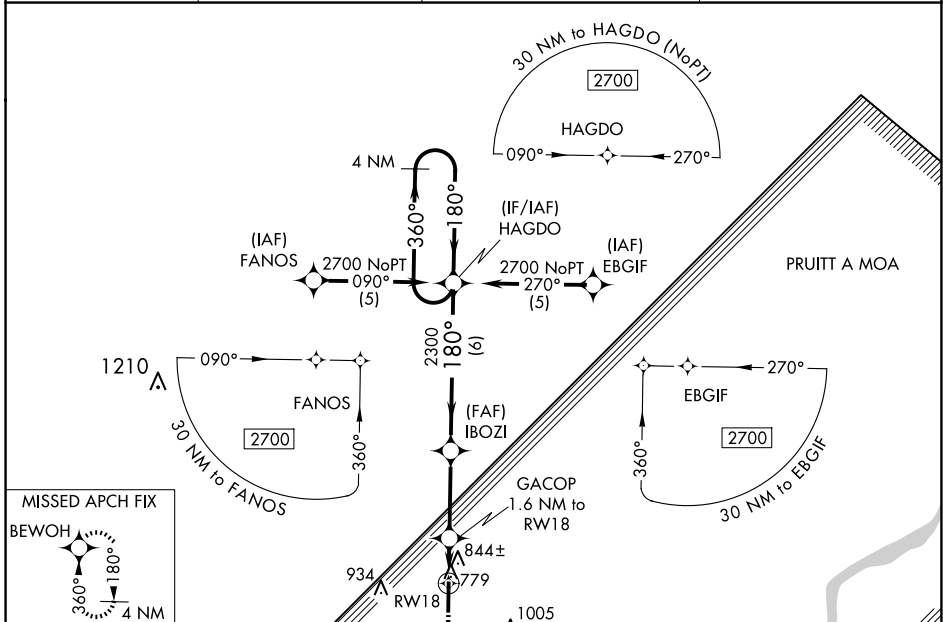


WAAS CH <b>45912</b> <b>W18A</b>	APP CRS <b>180°</b>	Rwy Idg TDZE Apt Elev	<b>5905</b> <b>734</b> <b>734</b>
--	------------------------	-----------------------------	---

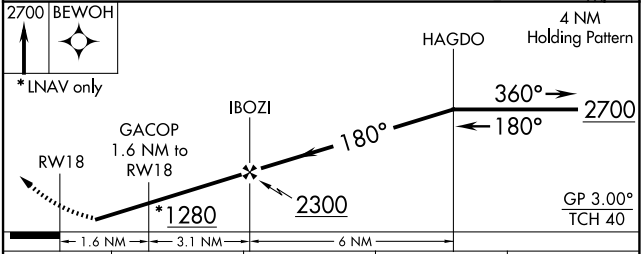
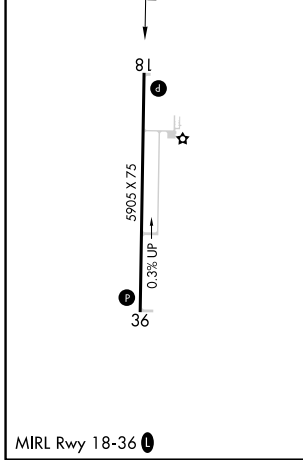
# RNAV (GPS) RWY 18

MOUNT STERLING MUNI (I63)

RNP APCH.		<p>Baro-VNAV NA. Rwy 18 helicopter visibility reduction below ¾ SM NA. When local altimeter setting not received, use Quincy altimeter setting: increase Circling Cat C and D MDA 60 feet and visibility Circling Cat C and D ¼ SM.</p>		<p>MISSED APPROACH: Climb to 2700 direct BEWOH and hold.</p>	
AWOS-3PT <b>118.325</b>	UIN ASOS <b>121.425</b>	KANSAS CITY CENTER <b>126.225 317.775</b>		UNICOM <b>122.8 (CTAF) 0</b>	



ELEV 734	TDZE 734
----------	----------



CATEGORY	A	B	C	D
LPV DA		1066-1¼	332 (400-1¼)	
LNAV/VNAV DA		1191-1¾	457 (500-1¾)	
LNAV MDA	1160-1	426 (500-1)	1160-1¼	426 (500-1¼)
CIRCLING	1200-1	466 (500-1)	1360-1¾ 626 (700-1¾)	1360-2 626 (700-2)

EC-3, 20 FEB 2025 to 20 MAR 2025

EC-3, 20 FEB 2025 to 20 MAR 2025