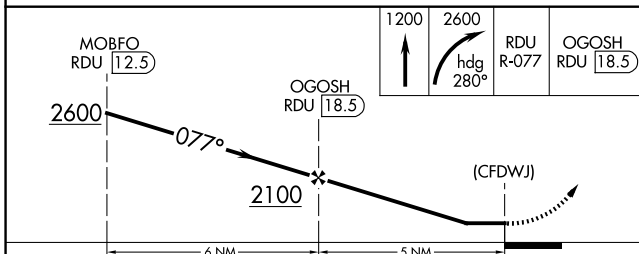
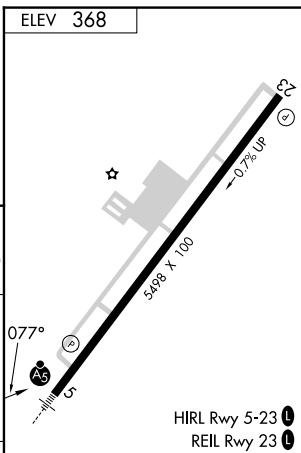
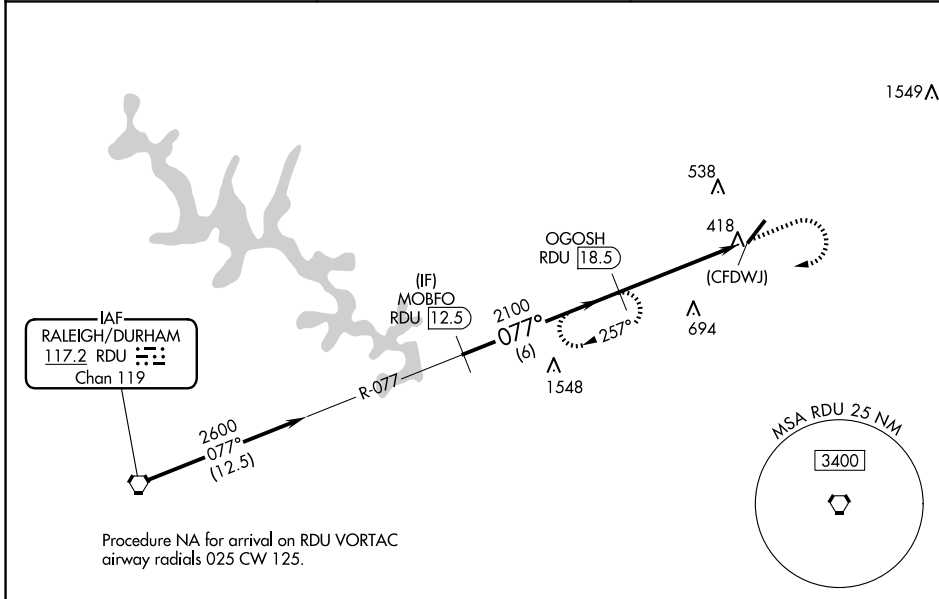


VORTAC RDU 117.2 Chan 119	APP CRS 077°	Rwy Idg TDZE Apt Elev N/A N/A 368
---	------------------------	---

VOR-A
TRIANGLE NORTH EXEC (L.H.Z)

DME required.	MISSED APPROACH: Climb to 1200 then climbing right turn to 2600 on heading 280° and on RDU VORTAC R-077 to OGOSH/RDU 18.5 DME and hold.
<p>⚠ When local altimeter not received, use Raleigh-Durham Intl altimeter setting and increase all MDA 80 feet and Cats B/C visibility ¼ SM.</p>	

AWOS-3 118.325	RALEIGH APP CON 125.3 353.675	UNICOM 123.0 (CTAF) 0
--------------------------	---	---------------------------------



CATEGORY	A	B	C	D	FAF to MAP 5 NM							
	CIRCLING	1260-1¼	892 (900-1¼)	1260-2¾	892 (900-2¾)	1260-3	892 (900-3)	Knots	60	90	120	150
							Min:Sec	5:00	3:20	2:30	2:00	1:40

SE-2, 20 FEB 2025 to 20 MAR 2025

SE-2, 20 FEB 2025 to 20 MAR 2025