

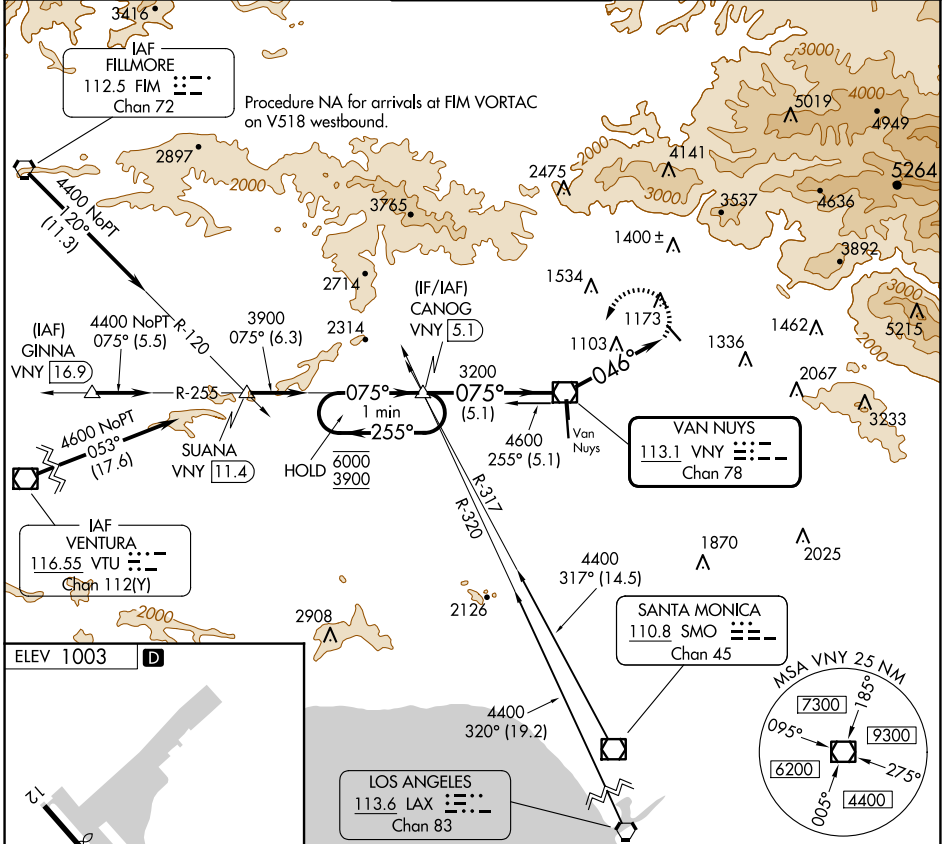
VOR/DME VNY <b>113.1</b> Chan <b>78</b>	APP CRS <b>046°</b>	Rwy Idg TDZE Apt Elev <b>N/A</b> <b>N/A</b> <b>1003</b>
---	------------------------	--

# VOR-A WHITEMAN (WHP)

**⚠** When local altimeter setting not received, use Burbank altimeter setting. Procedure NA at night.

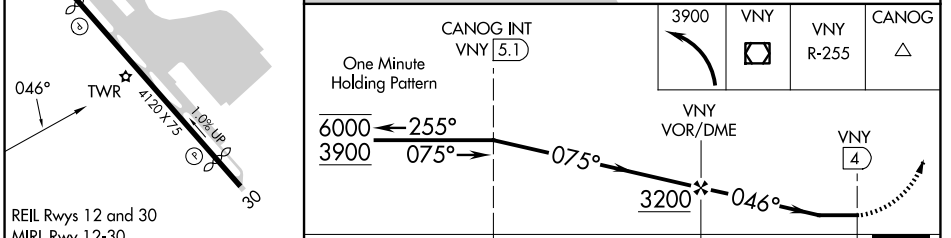
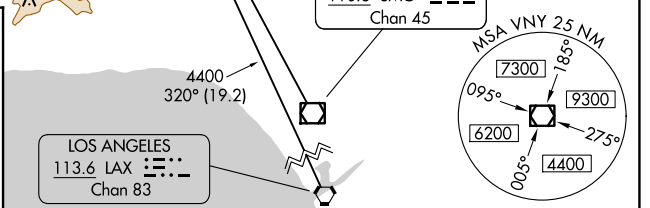
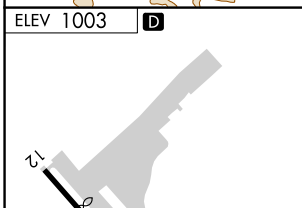
**⚠** MISSED APPROACH: Climbing left turn to 3900 direct VNY VOR/DME then on VNY VOR/DME R-255 to CANOG INT/ 5.1 DME and hold.

ATIS <b>132.1</b>	SOCAL APP CON <b>120.4 360.6 (NORTH)</b> <b>134.2 338.2 (WEST)</b>	WHITEMAN TOWER * <b>135.0 (CTAF)</b>	GND CON <b>125.0</b>	UNICOM <b>122.95</b>
----------------------	--	---	-------------------------	-------------------------



SW-3, 20 FEB 2025 to 20 MAR 2025

SW-3, 20 FEB 2025 to 20 MAR 2025



FAF to MAP 4 NM					CATEGORY	A	B	C	D
Knots	60	90	120	150	180	1760-1	1860-1¼	2200-3	NA
Min:Sec	4:00	2:40	2:00	1:36	1:20	757 (800-1)	857 (900-1¼)	1197 (1200-3)	