

(PONTI.NASCR1) 25051

AL-9155 (FAA)

# NASCR ONE ARRIVAL (RNAV)

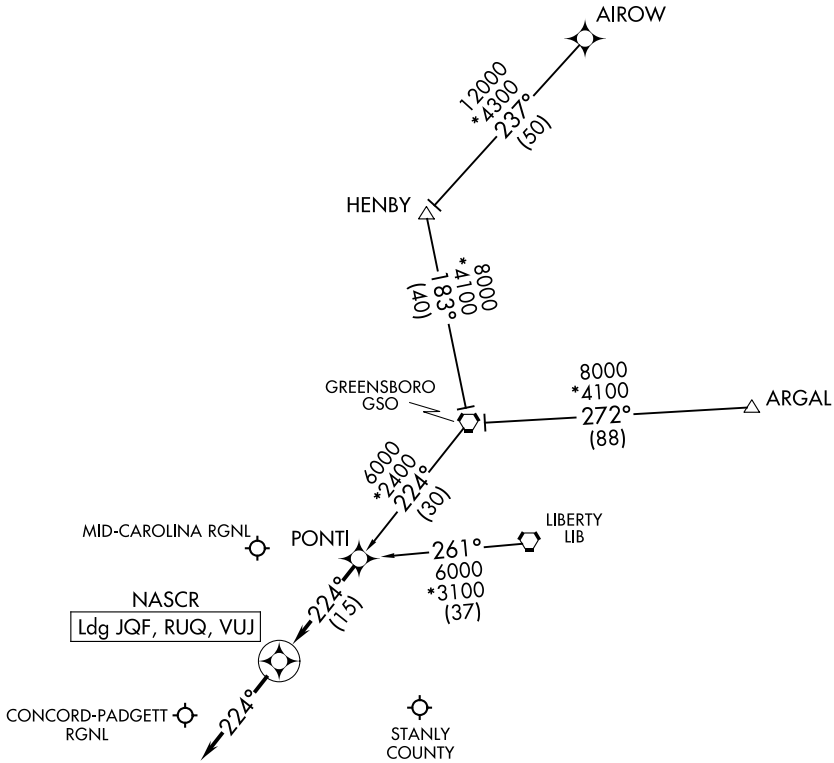
CONCORD, NORTH CAROLINA

CHARLOTTE APP CON  
128.325  
JQF ATIS  
133.675

RNAV 1 - DME/DME/IRU or GPS.  
RADAR required.

SE-2, 20 FEB 2025 to 20 MAR 2025

SE-2, 20 FEB 2025 to 20 MAR 2025



NOTE: Chart not to scale.

## ARRIVAL ROUTE DESCRIPTION

- AIROW TRANSITION (AIROW.NASCR1)
- ARGAL TRANSITION (ARGAL.NASCR1)
- GREENSBORO TRANSITION (GSO.NASCR1)
- LIBERTY TRANSITION (LIB.NASCR1)

**LANDING ALL AIRPORTS:** From PONTI on track 224° to NASCR, then on track 224°. Expect RADAR vectors to final approach course.

NASCR ONE ARRIVAL (RNAV)  
(PONTI.NASCR1) 20FEB25

CONCORD, NORTH CAROLINA