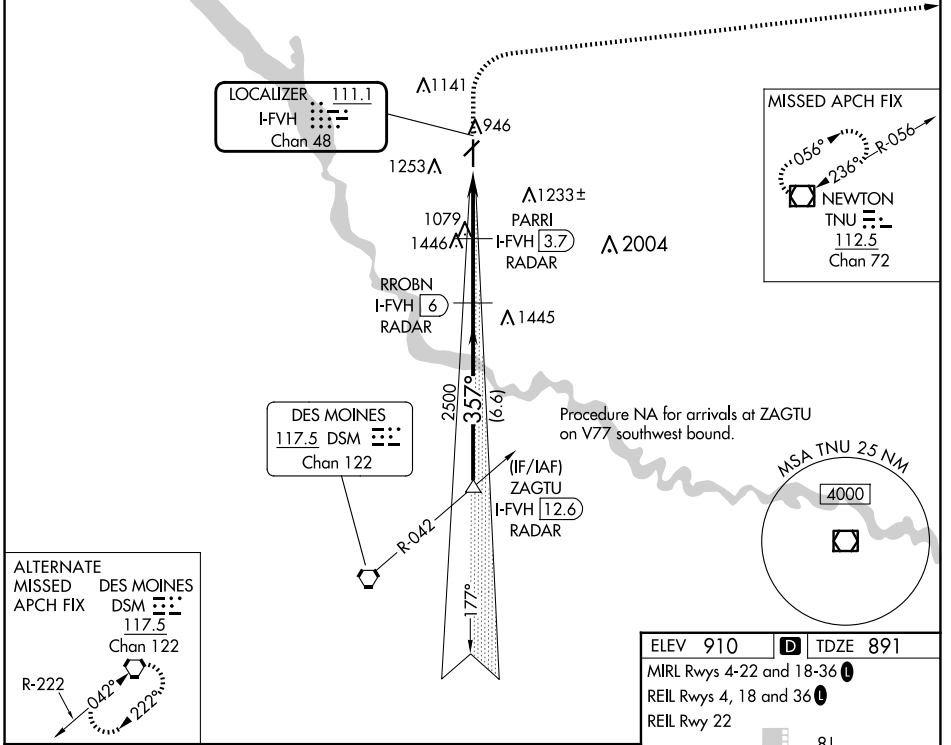


LOC/DME I-FVH <b>111.1</b> Chan 48	APP CRS <b>357°</b>	Rwy Idg TDZE Apt Elev	<b>5500</b> <b>891</b> <b>910</b>
--	------------------------	-----------------------------	---

# ILS or LOC RWY 36

ANKENY RGNL (IKV)

DME or RADAR required.		MISSED APPROACH: Climb to 2000 then climbing right turn to 4000 direct TNU VOR/DME and hold.	
AWOS-3 <b>119.175</b>	DES MOINES APP CON <b>123.9 307.15</b>	CLNC DEL <b>126.65</b>	UNICOM <b>122.9 (CTAF)</b>



ZAGTU I-FVH [12.6] RADAR	RROBN I-FVH [6] RADAR	PARRI I-FVH [3.7] RADAR	I-FVH [2.3]	I-FVH [1.1]
3000	2500	1760	2000	4000
GS 3.00° TCH 52	357°	2500	1760	
6.6 NM	2.3 NM	1.4 NM	1.3 NM	
CATEGORY	A	B	C	D
S-ILS 36	1091-3/4		200 (200-3/4)	
S-LOC 36	1340-1 449 (500-1)		1340-1 3/8 449 (500-1 3/8)	
CIRCLING	1560-1 650 (700-1)		1560-1 3/4 850 (700-1 3/4) 1760-2 3/4 850 (900-2 3/4)	

ELEV 910	TDZE 891
MRL Rwy 4-22 and 18-36	REIL Rwy 4, 18 and 36
REIL Rwy 22	
FAF to MAP 4.9 NM	
Knots	60 90 120 150 180
Min:Sec	4:54 3:16 2:27 1:58 1:38

NC-3, 20 FEB 2025 to 20 MAR 2025

NC-3, 20 FEB 2025 to 20 MAR 2025