

RNAV (GPS) Y RWY 21

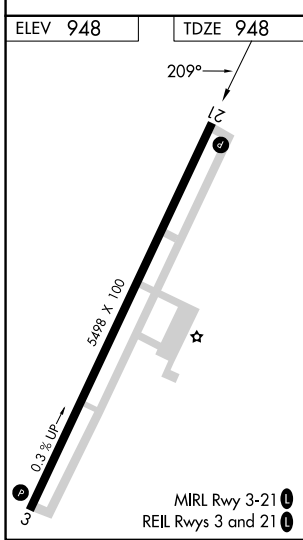
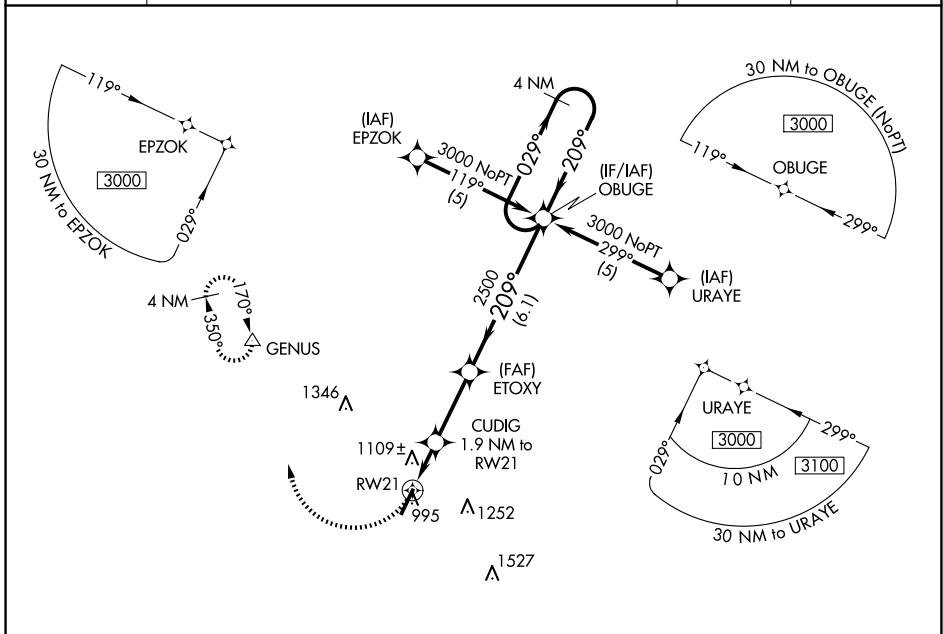
GEORGETOWN-SCOTT COUNTY RGNL (27K)

APP CRS	Rwy Idg	5498
209°	TDZE	948
	Apt Elev	948

NA DME/DME RNP-0.3 NA. VDP NA with Lexington altimeter setting. When local altimeter setting not received, use Lexington altimeter setting and increase all MDAs 40 feet, increase LNAV Cats C/D and Circling Cat D visibility ¼ SM.

MISSED APPROACH: Climbing right turn to 3000 direct GENUS and hold.

AWOS-3	LEXINGTON APP CON	CLNC DEL	UNICOM
119.975	120.15 259.3 (040° - 220°) 120.75 298.9 (221° - 039°)	127.425	123.0 (CTAF) 0



CATEGORY	A		B		C		D	
	1360-1	412 (500-1)	1360-1¼	412 (500-1¼)	1560-1¾	612 (700-1¾)	1660-2¼	712 (800-2¼)
LNVA MDA	1360-1		412 (500-1)		1360-1¼		412 (500-1¼)	
CIRCLING	1420-1		472 (500-1)		1560-1¾		1660-2¼	
					612 (700-1¾)		712 (800-2¼)	

SE-1, 20 FEB 2025 to 20 MAR 2025

SE-1, 20 FEB 2025 to 20 MAR 2025