

WAAS CH <b>58138</b> <b>W15A</b>	APP CRS <b>148°</b>	Rwy Idg <b>3999</b> TDZE <b>1067</b> Apt Elev <b>1067</b>
--	------------------------	---

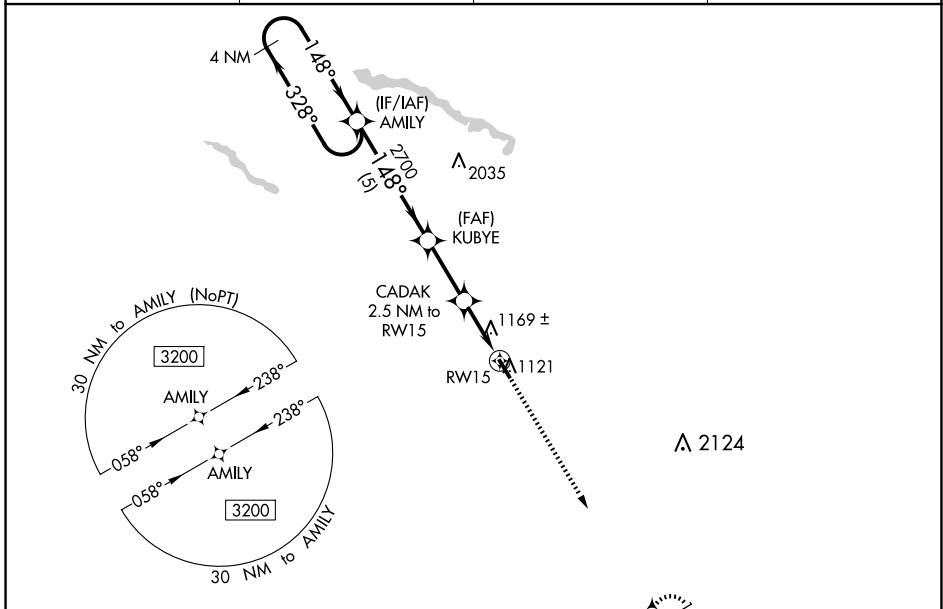
# RNAV (GPS) RWY 15

ST JAMES MUNI (JYG)

**⚠** DME/DME RNP-0.3 NA. For uncompensated Baro-VNAV systems, procedure NA below -17°C (2°F) or above 54°C (130°F). Baro-VNAV and VDP NA when using New Ulm altimeter setting. When local altimeter not received, use New Ulm, MN altimeter setting and increase LPV DA to 1372 feet and LNAV/VNAV DA to 1530 feet, and all MDA 60 feet.

**MISSED APPROACH:** Climb to 3200 direct PUGJU and hold.

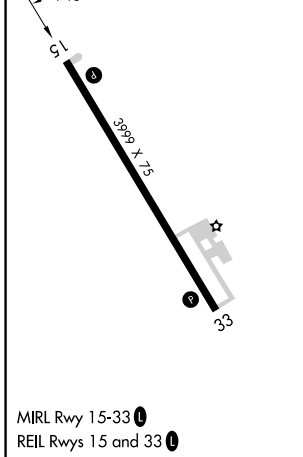
AWOS-3PT <b>123.7</b>	MINNEAPOLIS CENTER <b>127.75 257.7</b>	GCO <b>121.725</b>	CTAF <b>122.9</b> <b>Ⓛ</b>
--------------------------	---	-----------------------	-------------------------------



NC-1, 20 FEB 2025 to 20 MAR 2025

NC-1, 20 FEB 2025 to 20 MAR 2025

ELEV 1067	TDZE 1067
-----------	-----------



4 NM Holding Pattern	AMILY	KUBYE	CADAK 2.5 NM to RW15	3200	PUGJU
3200	← 328°	→ 148°	→ 148°	2700	*1880
GP 3.00°				*1.1 NM to RW15	
TCH 40	5 NM	2.5 NM	1.4	1.1	
CATEGORY	A	B	C	D	
LPV DA	1317-1	250 (300-1)			NA
LNAV/VNAV DA	1475-1 <sup>3</sup> / <sub>8</sub>	408 (500-1 <sup>3</sup> / <sub>8</sub> )			NA
LNAV MDA	1420-1	353 (400-1)			NA
<b>C</b> CIRCLING	1500-1	1520-1			NA
	433 (500-1)	453 (500-1)			