

WAAS CH <b>53538</b> <b>W33A</b>	APP CRS <b>328°</b>	Rwy ldg TDZE Apt Elev	<b>3999</b> <b>1067</b> <b>1067</b>
--	------------------------	-----------------------------	---

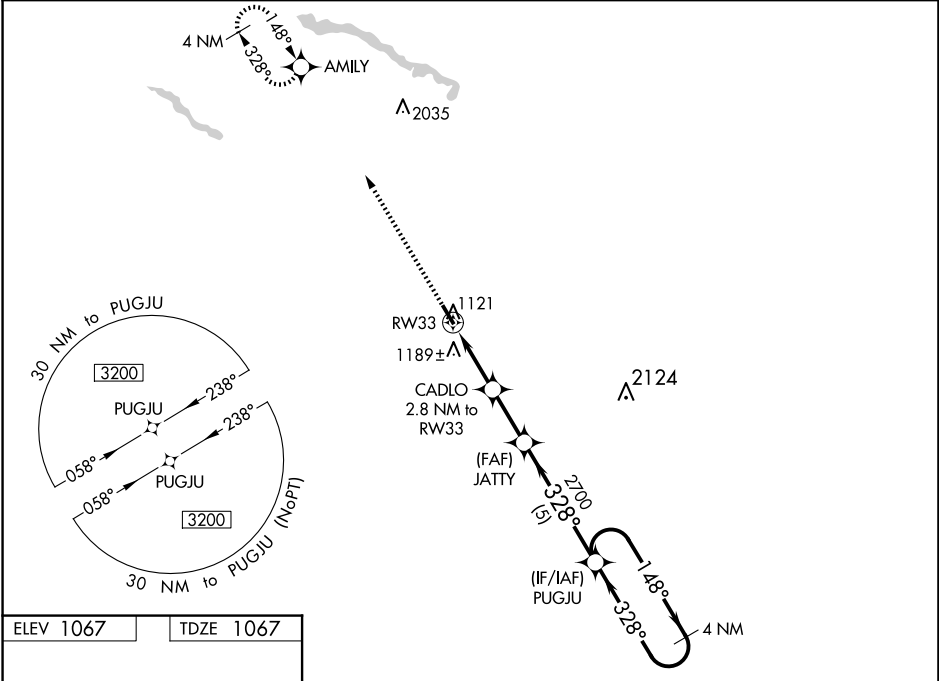
# RNAV (GPS) RWY 33

ST JAMES MUNI (JYG)

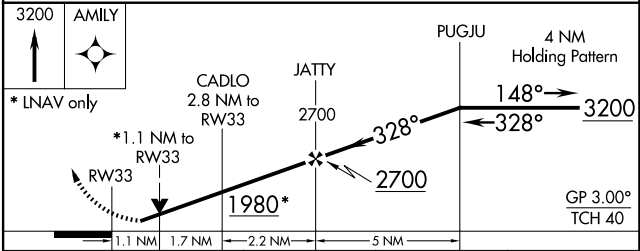
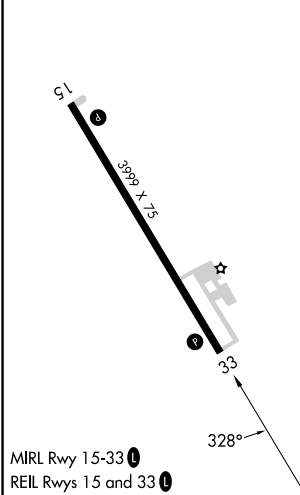
**⚠** For uncompensated Baro-VNAV systems, procedure NA below -17°C (2°F) or above 54°C (130°F). DME/DME RNP-0.3 NA. Helicopter visibility reduction below 3/4 SM NA. Baro-VNAV and VDP NA when using New Ulm altimeter setting. When local altimeter setting not received, use New Ulm, MN altimeter setting and increase LPV DA to 1398 feet, LNAV/VNAV DA to 1549 feet, and all MDA 60 feet.

**MISSED APPROACH:** Climb to 3200 direct AMILY and hold.

AWOS-3PT <b>123.7</b>	MINNEAPOLIS CENTER <b>127.75 257.7</b>	GCO <b>121.725</b>	CTAF <b>122.9</b> <b>Ⓛ</b>
--------------------------	---	-----------------------	-------------------------------



ELEV 1067	TDZE 1067
-----------	-----------



CATEGORY	A	B	C	D
LPV DA	1343-1	276 (300-1)		NA
LNAV/VNAV DA	1494-1½	427 (500-1½)		NA
LNAV MDA	1440-1	373 (400-1)		NA
<b>C</b> CIRCLING	1500-1 433 (500-1)	1520-1 453 (500-1)		NA

NC-1, 20 FEB 2025 to 20 MAR 2025

NC-1, 20 FEB 2025 to 20 MAR 2025