

WAAS CH <b>87114</b> <b>W28A</b>	APP CRS <b>276°</b>	Rwy Idg TDZE Apt Elev	<b>5151</b> <b>110</b> <b>112</b>
--	------------------------	-----------------------------	---

# RNAV (GPS) RWY 28

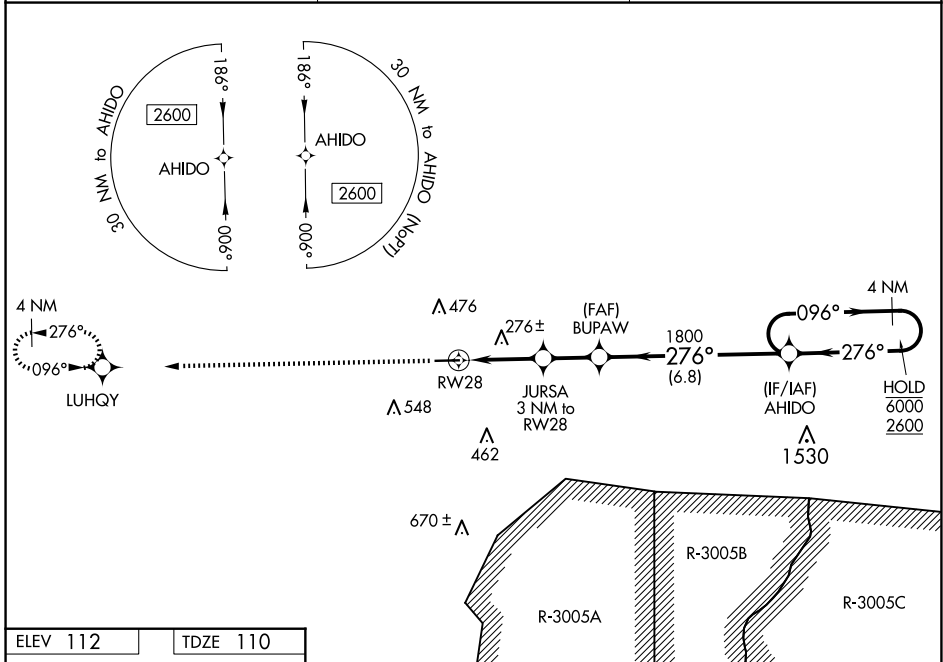
CLAXTON-EVANS COUNTY (C'WV)

RNP APCH GPS.

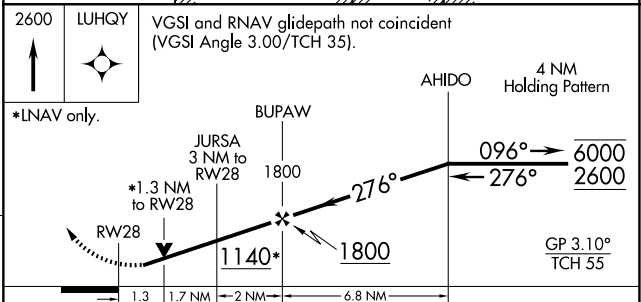
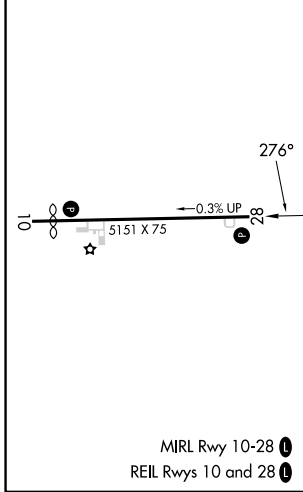
**▼** Rwy 28 helicopter visibility reduction below 3/4 SM NA. For uncompensated Baro-VNAV systems, LNAV/VNAV NA below -15°C or above 54°C. Circling Rwy 10 NA at night.

**▲** MISSED APPROACH: Climb to 2600 direct LUHQY and hold.

AWOS-3 <b>120.075</b>	JACKSONVILLE CENTER <b>132.925 363.2</b>	UNICOM <b>122.8 (CTAF) 0</b>
--------------------------	---	---------------------------------



ELEV 112	TDZE 110
----------	----------



CATEGORY	A	B	C	D
LPV DA		386-1	276 (300-1)	
LNAV/VNAV DA		403-1	293 (300-1)	
LNAV MDA	540-1	430 (500-1)	540-1 1/4	430 (500-1 1/4)
<b>CIRCLING</b>	580-1 468 (500-1)	780-1 668 (700-1)	860-2 1/4 748 (800-1 1/4)	860-2 1/2 748 (800-2 1/2)

SE-4, 20 FEB 2025 to 20 MAR 2025

SE-4, 20 FEB 2025 to 20 MAR 2025