

WAAS CH <b>87121</b> <b>W18A</b>	APP CRS <b>177°</b>	Rwy Idg TDZE Apt Elev	<b>6002</b> <b>297</b> <b>317</b>
--	------------------------	-----------------------------	---

# RNAV (GPS) RWY 18

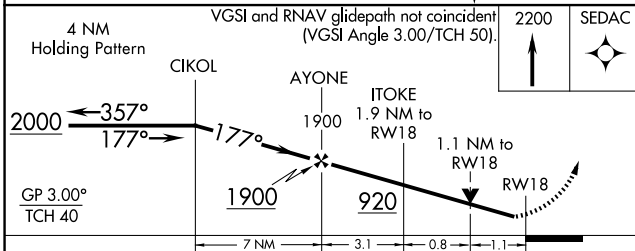
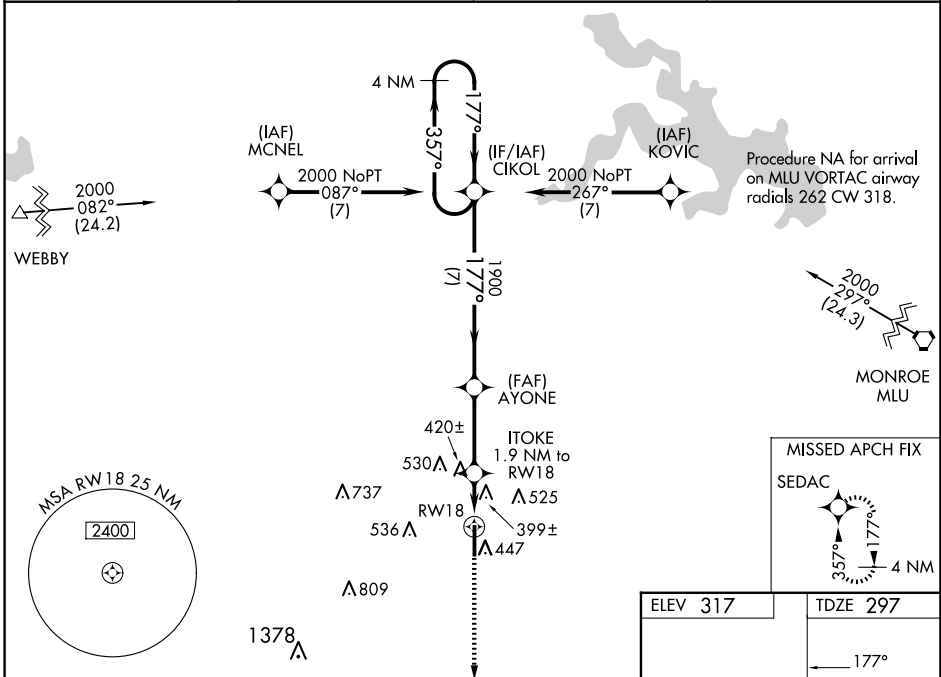
RUSTON RGNL (RSN)

RNP APCH - GPS.

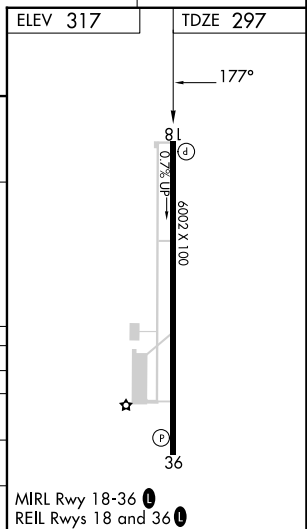
**⚠** Baro-VNAV NA when using Monroe altimeter setting. For uncompensated Baro-VNAV systems, LNAV/VNAV NA below -15°C or above 42°C. Rwy 18 helicopter visibility reduction below 3/4 SM NA. VDP NA with Monroe altimeter setting. When local altimeter setting not received, use Monroe altimeter setting and increase all DA 97 feet and all MDA 100 feet, increase LPV and LNAV/VNAV all Cats visibility 1/4 SM, and Circling Cat C and D visibility 1/2 SM.

**MISSED APPROACH:**  
Climb to 2200 direct  
SEDAC and hold.

AWOS-3PT <b>119.525</b>	MONROE APP CON* <b>126.9 307.9</b>	CLNC DEL <b>118.8</b>	UNICOM <b>122.7 (CTAF) 0</b>
----------------------------	---------------------------------------	--------------------------	---------------------------------



CATEGORY	A	B	C	D
LPV DA		547-7/8	250 (300-7/8)	
LNAV/VNAV DA		723-1 1/2	426 (500-1 1/2)	
LNAV MDA	680-1	383 (400-1)	680-1 1/8	383 (400-1 1/8)
CIRCLING	760-1 443 (500-1)	780-1 463 (500-1)	900-1 1/2 583 (600-1 1/2)	960-2 643 (700-2)



SC-4, 20 FEB 2025 to 20 MAR 2025

SC-4, 20 FEB 2025 to 20 MAR 2025