

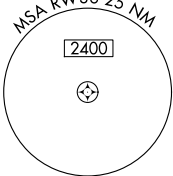
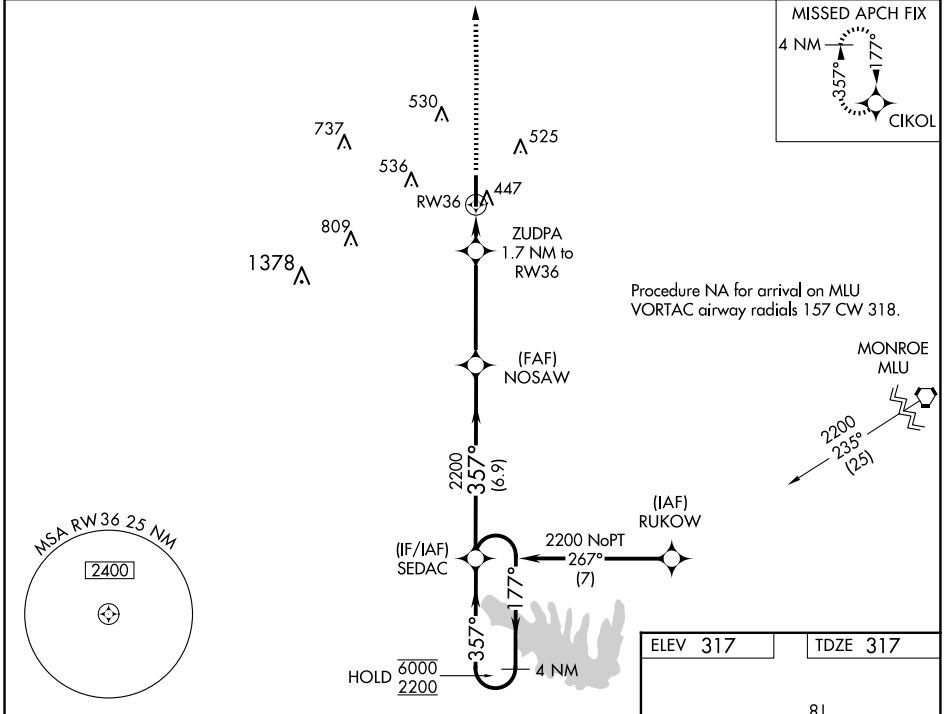
WAAS CH 86722 W36A	APP CRS 357°	Rwy Idg 6002 TDZE 317 Apt Elev 317
--	------------------------	---

RNAV (GPS) RWY 36

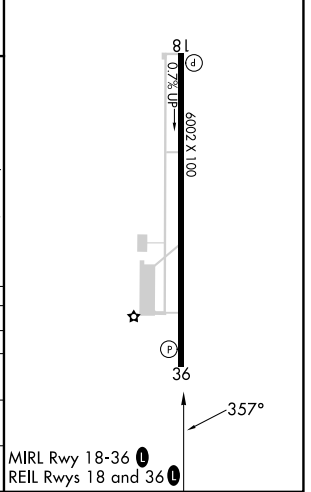
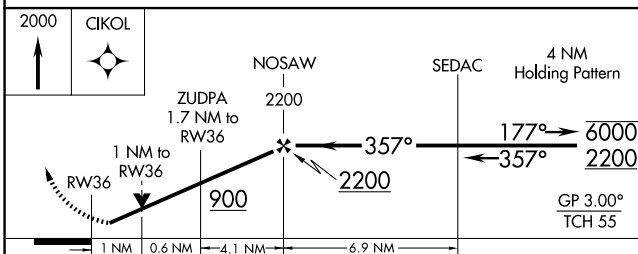
RUSTON RGNL (RSN)

RNP APCH - GPS.	MISSED APPROACH: Climb to 2000 direct CIKOL and hold.
<p>▼ Rwy 36 helicopter visibility reduction below ¼ SM NA. ▲ For uncompensated Baro-VNAV systems, LNAV/VNAV NA below -15°C or above 54°C.</p>	

AWOS-3PT 119.525	MONROE APP CON * 126.9 307.9	CLNC DEL 118.8	UNICOM 122.7 (CTAF) 0
----------------------------	--	--------------------------	---------------------------------



ELEV 317	TDZE 317
----------	----------



CATEGORY	A	B	C	D
LPV DA		602-¾	285 (300-¾)	
LNAV/VNAV DA		628-¾	311 (400-¾)	
LNAV MDA	700-¾	383 (400-¾)	700-1	383 (400-1)
CIRCLING	760-1 443 (500-1)	780-1 463 (500-1)	900-1½ 583 (600-1½)	960-2 643 (700-2)

SC-4, 20 FEB 2025 to 20 MAR 2025

SC-4, 20 FEB 2025 to 20 MAR 2025