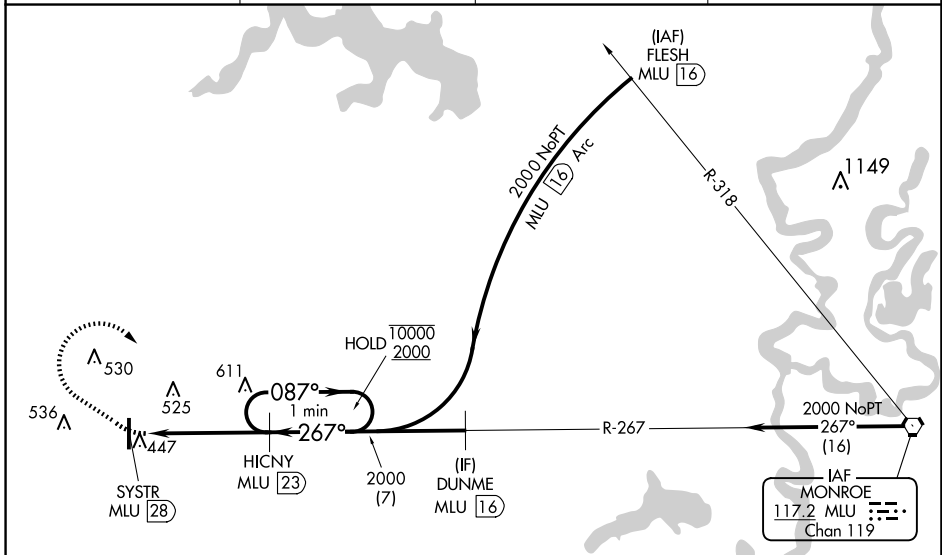


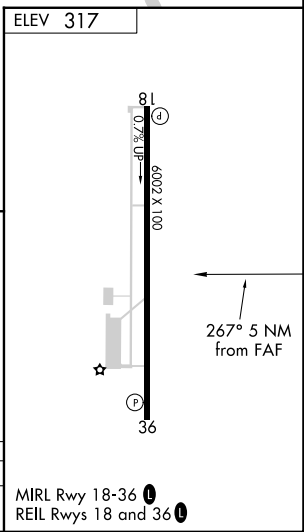
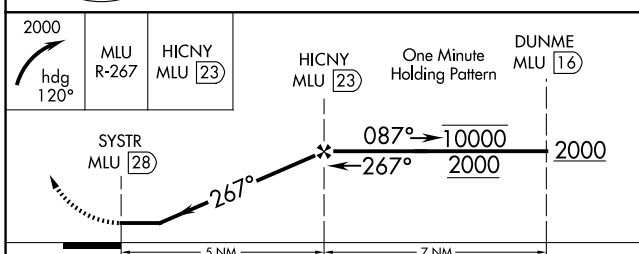
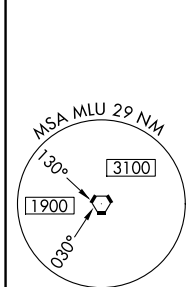
VORTAC MLU 117.2 Chan 119	APP CRS 267°	Rwy Idg TDZE Apt Elev N/A N/A 317
---	------------------------	--

VOR-A
RUSTON RGNL (RSN)

DME required.		MISSED APPROACH: Climbing right turn to 2000 on heading 120° and on MLU VORTAC R-267 to HICNY/23 DME and hold, continue climb-in-hold to 2000.	
AWOS-3PT 119.525	MONROE APP CON * 126.9 307.9	CLNC DEL 118.8	UNICOM 122.7 (CTAF)



Procedure NA for arrival on MLU VORTAC airway radials 262 CW 277.



CATEGORY	A	B	C	D
C CIRCLING	880-1	563 (600-1)	900-1½ 583 (600-1½)	960-2 643 (700-2)

MIRL Rwy 18-36
REIL Rwy 18 and 36

SC-4, 20 FEB 2025 to 20 MAR 2025

SC-4, 20 FEB 2025 to 20 MAR 2025