

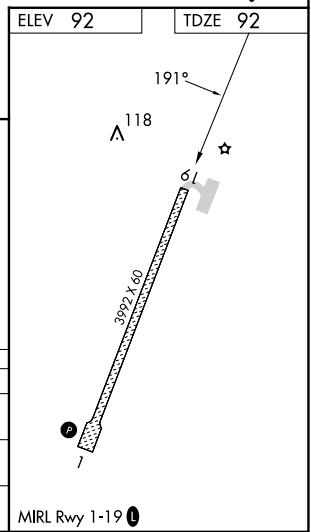
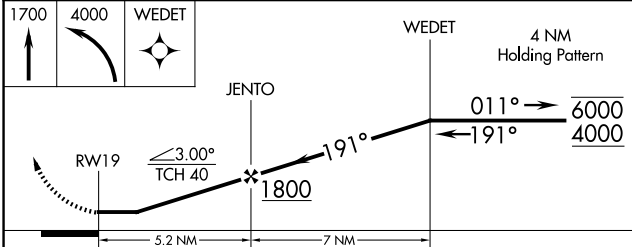
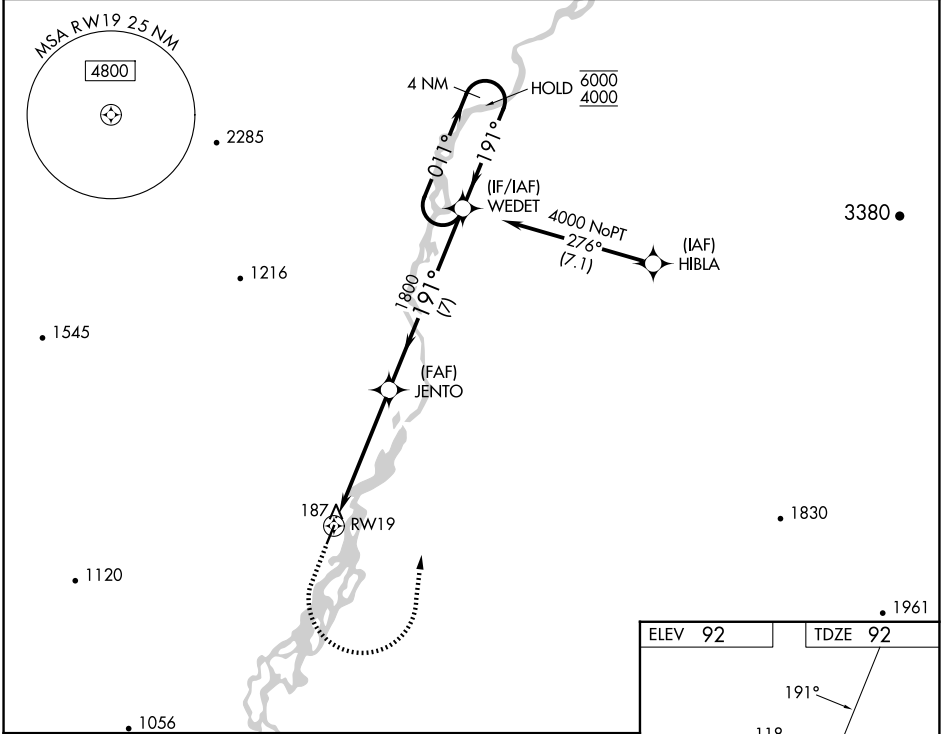
WAAS CH <b>86842</b> <b>W19A</b>	APP CRS <b>191°</b>	Rwy Idg <b>3992</b> TDZE <b>92</b> Apt Elev <b>92</b>
--	------------------------	---

# RNAV (GPS) RWY 19

NOATAK (WTK)(PAWN)

RNP APCH-GPS.	MISSED APPROACH: Climb to 1700 then climbing left turn to 4000 direct WEDET and hold.
<p>▼ Rwy 19 helicopter visibility reduction below 1 SM NA. ▲ Straight-in Rwy 19 NA at night, Circling Rwy 19 NA at night.</p>	

AWOS-3P <b>135.75</b>	ANCHORAGE CENTER <b>119.2 263.0</b>	KOTZEBUE RADIO <b>122.4</b>	UNICOM <b>122.8 (CTAF)</b>
--------------------------	--	--------------------------------	-------------------------------



CATEGORY	A	B	C	D
LP MDA	540-1	448 (500-1)	540-1 $\frac{3}{8}$	448 (500-1 $\frac{3}{8}$ )
LNAV MDA	560-1	468 (500-1)	560-1 $\frac{3}{8}$	468 (500-1 $\frac{3}{8}$ )
CIRCLING	560-1	468 (500-1)	560-1 $\frac{1}{2}$ 468 (500-1 $\frac{1}{2}$ )	820-2 $\frac{1}{4}$ 728 (800-2 $\frac{1}{4}$ )

AK, 20 FEB 2025 to 17 APR 2025

AK, 20 FEB 2025 to 17 APR 2025