

RADAR and DME required.

**TOP ALTITUDE:
ASSIGNED BY ATC**

TAKEOFF MINIMUMS
Rwy 18: Standard.
Rwy 36: NA - ATC.

NOTE: SOLDO Transition: ATC assigned.

LONE STAR DEP CON
135.975 379.9
GND CON
121.15
GRAND PRAIRIE TOWER ★
128.55 (CTAF)

BONHAM
114.6 BYP
Chan 93

PARIS
113.6 PRX
Chan 83

TEXARKANA
116.3 TXK
Chan 110

MAVERICK
113.1 TTT
Chan 78

NOBLY

ECKEY

SHERO

TRISS

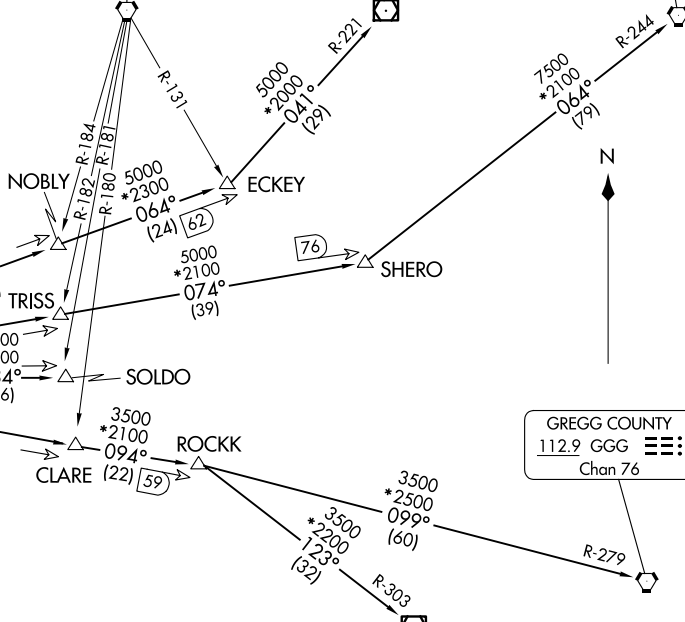
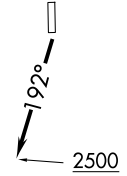
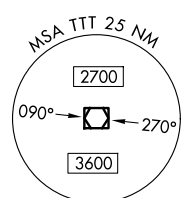
SOLDO

CLARE

ROCKK

GREGG COUNTY
112.9 GGG
Chan 76

TYLER
114.2 TYR
Chan 89



GARLAND FIVE DEPARTURE
(GARLS.TT) 251AN24

GARLAND FIVE DEPARTURE
(GARLS.TT) 251AN24

GARLAND FIVE DEPARTURE
(GARLS.TT) 24305

GARLAND FIVE DEPARTURE
(GARLS.TT) 24305

AL-9209 (FAA)

(CONTINUED ON FOLLOWING PAGE)

NOTE: Chart not to scale.

GARLAND FIVE DEPARTURE



DEPARTURE ROUTE DESCRIPTION

TAKEOFF RUNWAY 18: Climb on heading 192° to 2500 before proceeding on course.

When entering controlled airspace, fly assigned heading for RADAR vectors to appropriate route. Maintain ATC assigned altitude.

GREGG COUNTY TRANSITION (GARL5.GGG): From over TTT VOR/DME on TTT R-094 to ROCKK, then on GGG R-279 to GGG VORTAC.

PARIS TRANSITION (GARL5.PRX): From over TTT VOR/DME on TTT R-064 to ECKEY, then on PRX R-221 to PRX VOR/DME.

SOLDO TRANSITION (GARL5.SOLDO): From over TTT VOR/DME on TTT R-084 to SOLDO.

TEXARKANA TRANSITION (GARL5.TXK): From over TTT VOR/DME on TTT R-074 to SHERO, then on TXK R-244 to TXK VORTAC.

TYLER TRANSITION (GARL5.TYR): From over TTT VOR/DME on TTT R-094 to ROCKK, then on TYR R-303 to TYR VOR/DME.

SC-2, 20 FEB 2025 to 20 MAR 2025

SC-2, 20 FEB 2025 to 20 MAR 2025