

WAAS CH <b>62814</b> <b>W36A</b>	APP CRS <b>358°</b>	Rwy ldg <b>6500</b> TDZE <b>703</b> Apt Elev <b>727</b>
--	------------------------	---

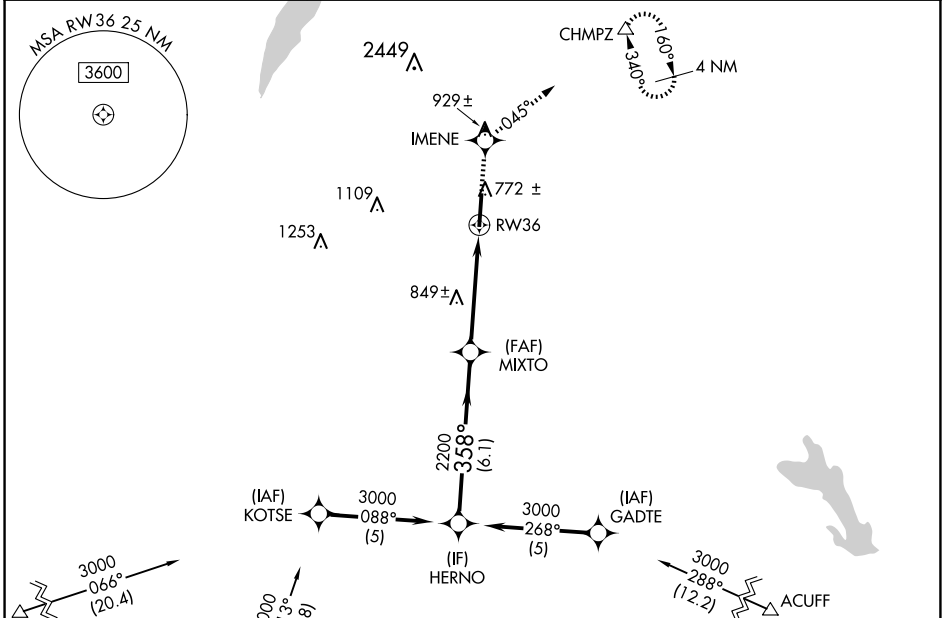
# RNAV (GPS) RWY 36

MID-WAY RGNL (JWY)

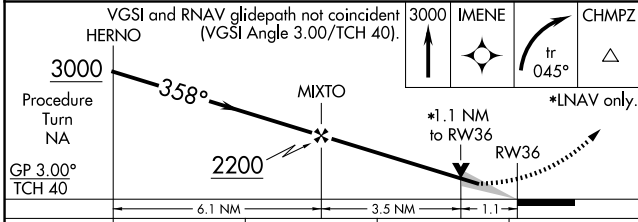
**⚠** For uncompensated Baro-VNAV systems, LNAV/VNAV NA below -16°C (4°F) or above 47°C (117°F). DME/DME RNP-0.3 NA. When local altimeter setting not received, use Dallas Love Fld altimeter setting and increase all DA 88 feet and all MDA 100 feet, increase LPV all Cats visibility ¼ mile, LNAV/VNAV all Cats visibility ½ mile, LNAV Cats C and D visibility ¼ mile, Circling Cat D visibility ¼ mile. Baro-VNAV and VDP NA when using Dallas Love Fld altimeter setting.

**MISSED APPROACH:** Climb to 3000 direct IMENE and right turn via track 045° to CHMPZ and hold, continue climb-in-hold to 3000.

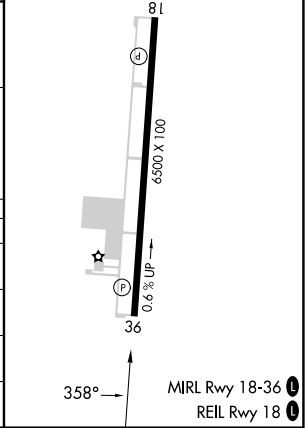
AWOS-3P <b>119.575</b>	LONE STAR APP CON <b>125.2 343.65</b>	UNICOM <b>122.975 (CTAF) 0</b>
---------------------------	--	-----------------------------------



ELEV 727	TDZE 703
----------	----------



CATEGORY	A	B	C	D
LPV DA		953-1	250 (300-1)	
LNAV/VNAV DA		992-1	289 (300-1)	
LNAV MDA	1100-1	397 (400-1)		1100-1¼ 397 (400-1¼)
CIRCLING	1160-1 433 (500-1)	1180-1 453 (500-1)	1300-1½ 573 (600-1½)	1420-2¼ 693 (700-2¼)



SC-2, 20 FEB 2025 to 20 MAR 2025

SC-2, 20 FEB 2025 to 20 MAR 2025