

APP CRS	Rwy Idg	3200
099°	TDZE	400
	Apt Elev	400

RNAV (GPS) RWY 10

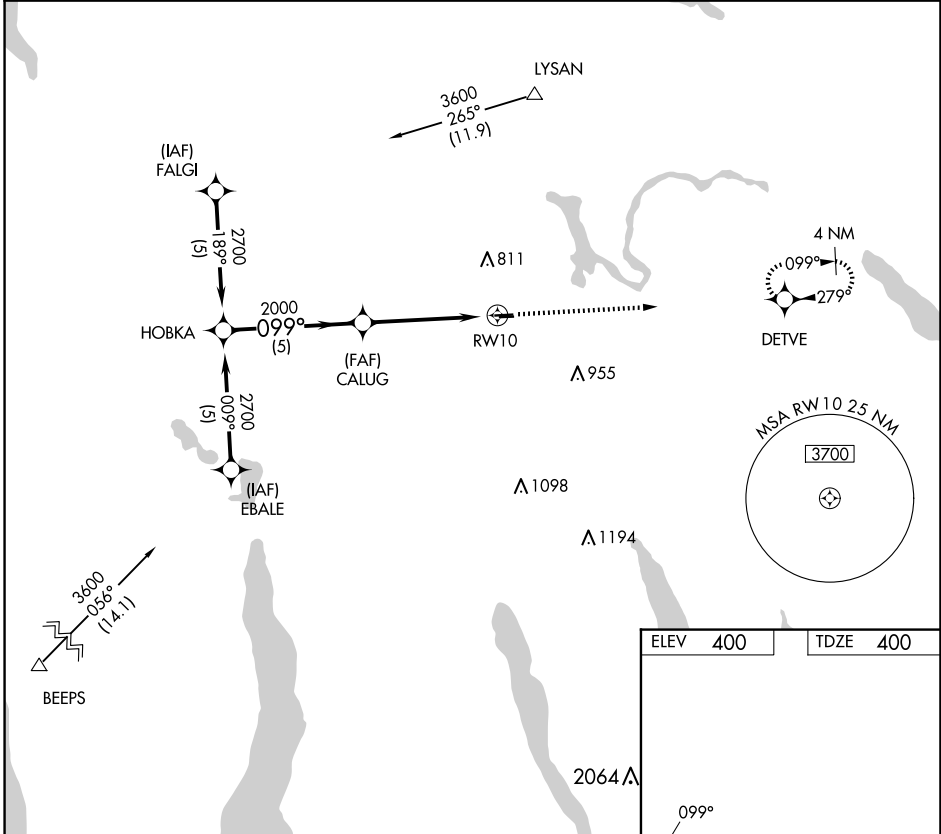
WHITFORDS (B16)

RNP APCH.

▼ Use Syracuse altimeter setting. Procedure NA at night.
▲ NA Rwy 10 helicopter visibility reduction below 1 SM NA.

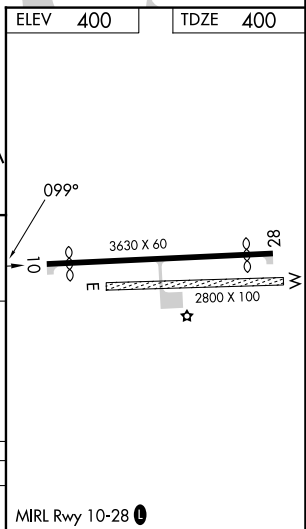
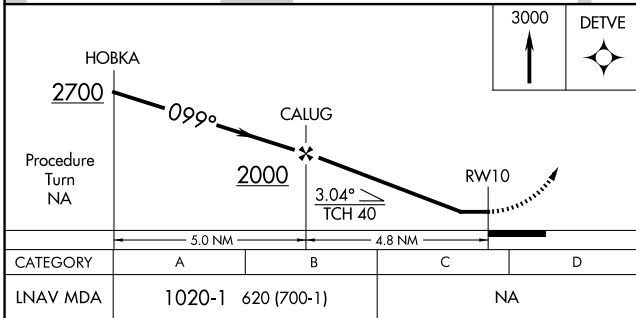
MISSED APPROACH: Climb to 3000 direct DETVE WP and hold.

SYRACUSE APP CON 126.125 269.125	UNICOM 122.8 (CTAF)	122.70
--	-------------------------------	---------------



NE-2, 20 FEB 2025 to 20 MAR 2025

NE-2, 20 FEB 2025 to 20 MAR 2025



CATEGORY	A	B	C	D
LNAV MDA	1020-1	620 (700-1)	NA	