

WAAS CH <b>48929</b> <b>W15A</b>	APP CRS <b>148°</b>	Rwy Idg TDZE Apt Elev	<b>2997</b> <b>345</b> <b>345</b>
--	------------------------	-----------------------------	---

# RNAV (GPS) RWY 15

OXFORD COUNTY RGNL (81B)

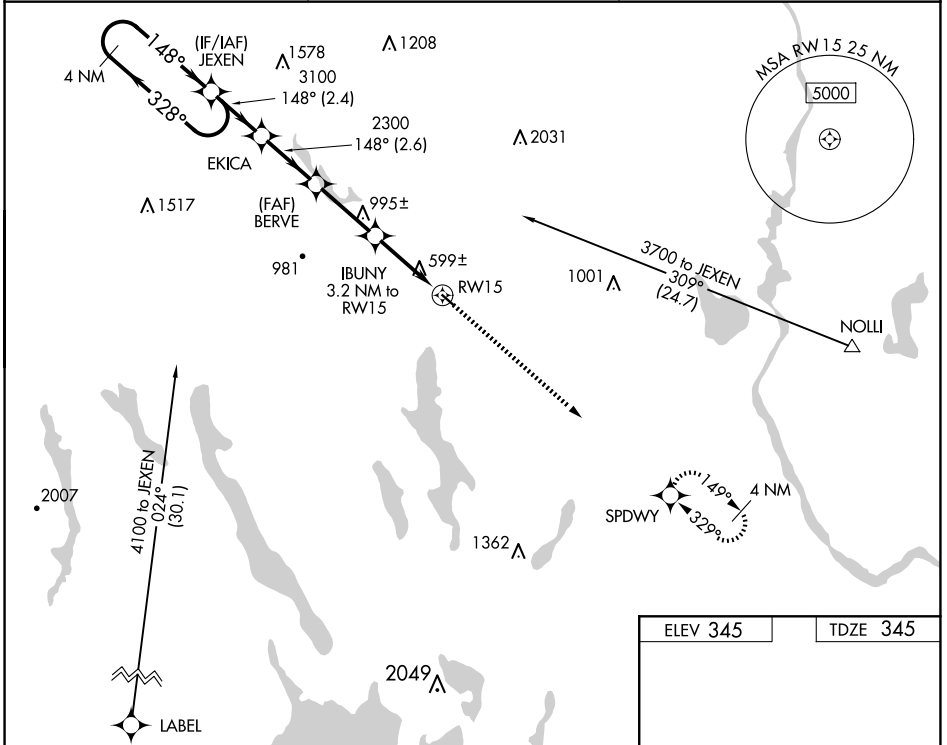
**NA** DME/DME RNP-0.3 NA. Procedure NA at night. Use Auburn/Lewiston altimeter setting; when not received, use Fryeburg altimeter setting and increase all MDAs 40 feet. Helicopter visibility reduction below 1 SM NA.

**MISSED APPROACH:** Climb to 3600 direct SPDWY and hold, continue climb-in-hold to 3600.

LEW AWOS-3  
**118.025**

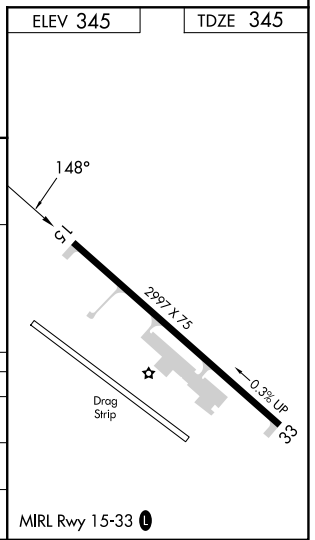
PORTLAND APP CON \*  
**125.5 353.9**

UNICOM  
**122.8 (CTAF)**



NE-1, 20 FEB 2025 to 20 MAR 2025

NE-1, 20 FEB 2025 to 20 MAR 2025



CATEGORY	A	B	C	D
LP MDA	900-1	555 (600-1)		NA
LP MDA	1140-1 795 (800-1)	1140-1¼ 795 (800-1¼)		NA
CIRCLING	1220-1¼ 875 (900-1¼)	1400-1½ 1055 (1100-1½)		NA