

| | | |
|---|------------------------|---|
| WAAS CH 70323 W 18A | APP CRS 184° | Rwy Idg TDZE 777 Apt Elev 777 |
|---|------------------------|---|

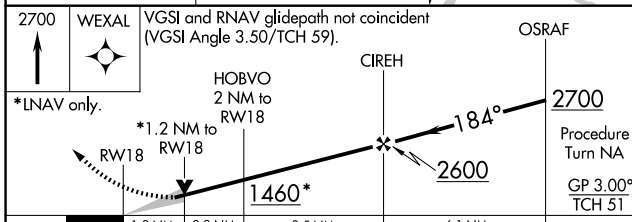
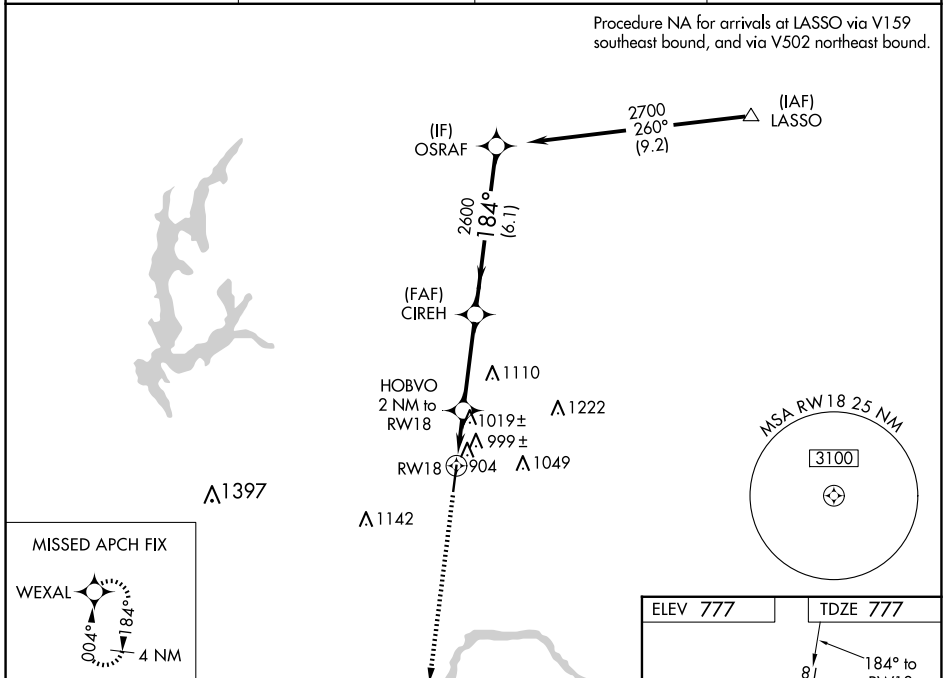
RNAV (GPS) RWY 18

MIDWEST NTL AIR CENTER (GPH)

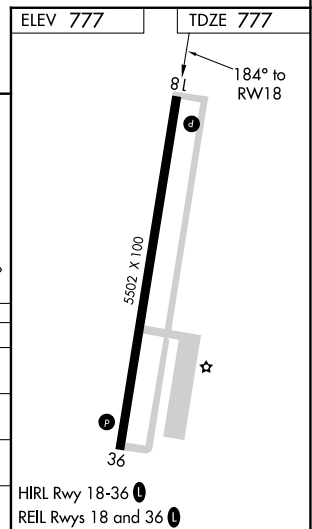
NA For uncompensated Baro-VNAV systems, LNAV/VNAV NA below -16°C (4°F) or above 54°C (130°F). DME/DME RNP- 0.3 NA.
Baro-VNAV and VDP NA when using Kansas City Intl altimeter setting.
Obtain local altimeter setting on CTAF; when not received, use Kansas City Intl altimeter setting and increase all DAs 79 feet and all LPV and LNAV/VNAV visibilities ¼ mile; increase all MDAs 80 feet and circling visibility Cat C ¼ mile.

MISSED APPROACH: Climb to 2700 direct WEXAL and hold.

| | | | |
|---------------------------|--|--------------------------|-------------------------------|
| AWOS-3T 120.275 | KANSAS CITY APP CON 118.4 307.35 | CLNC DEL 118.2 | UNICOM 122.7 (CTAF) |
|---------------------------|--|--------------------------|-------------------------------|



| CATEGORY | A | B | C | D |
|--------------|-----------------------|-----------------------|-------------------------|----|
| LPV DA | 1189-1½ 412 (500-1½) | | | NA |
| LNAV/VNAV DA | 1324-2 547 (600-2) | | | NA |
| LNAV MDA | 1280-1 | 503 (600-1) | 1280-1½ 503 (600-1½) | NA |
| CIRCLING | 1300-1 523 (600-1) | 1320-1 543 (600-1) | 1360-1½ 583 (600-1½) | NA |



NC-3, 20 FEB 2025 to 20 MAR 2025

NC-3, 20 FEB 2025 to 20 MAR 2025