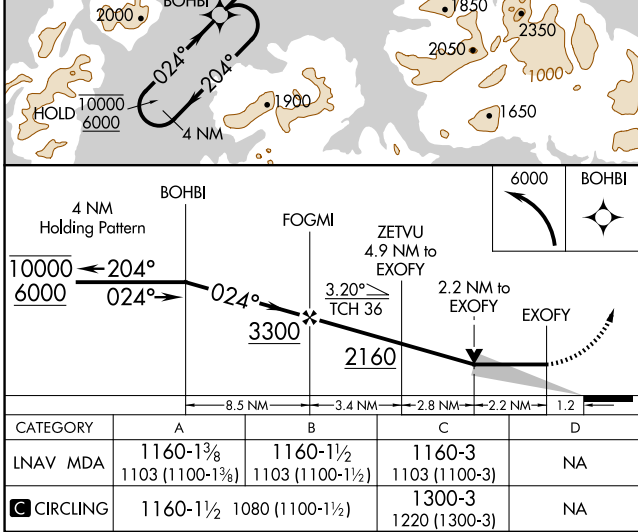
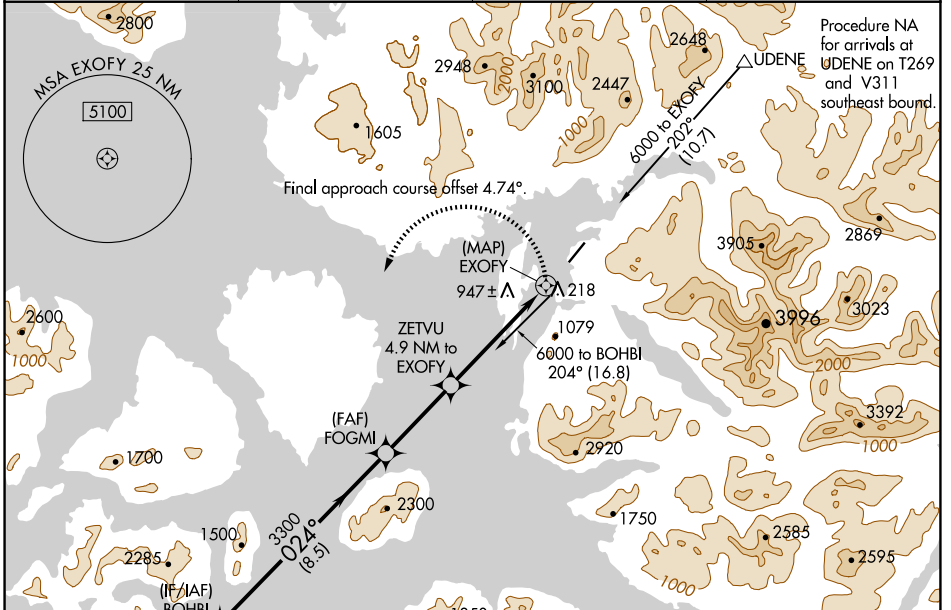


APP CRS	Rwy Idg	5000
024°	TDZE	57
	Apt Elev	80

RNAV (GPS) Y RWY 2

KLAWOCK (AKW) (PAKW)

RNP APCH-GPS.		MISSED APPROACH: (Do not exceed 165K until BOHBI) Climbing left turn to 6000 direct BOHBI and hold, continue climb-in-hold to 6000.	
Circling NA east of Rwy 2-20. Circling Rwy 20 NA at night. -9°C			
ASOS	ANCHORAGE CENTER	KETCHIKAN RADIO	CTAF
135.45	118.5 284.6	122.25	120.9



ELEV 80	TDZE 57
CATEGORY A B C D LNAV MDA 1160-1 ³ / ₈ (1103 (1100-1 ³ / ₈)) 1160-1 ¹ / ₂ (1103 (1100-1 ¹ / ₂)) 1160-3 (1103 (1100-3)) NA CIRCLING 1160-1 ¹ / ₂ 1080 (1100-1 ¹ / ₂) 1300-3 (1220 (1300-3)) NA	

AK, 20 FEB 2025 to 17 APR 2025

AK, 20 FEB 2025 to 17 APR 2025