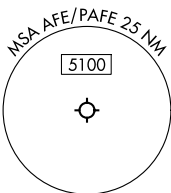
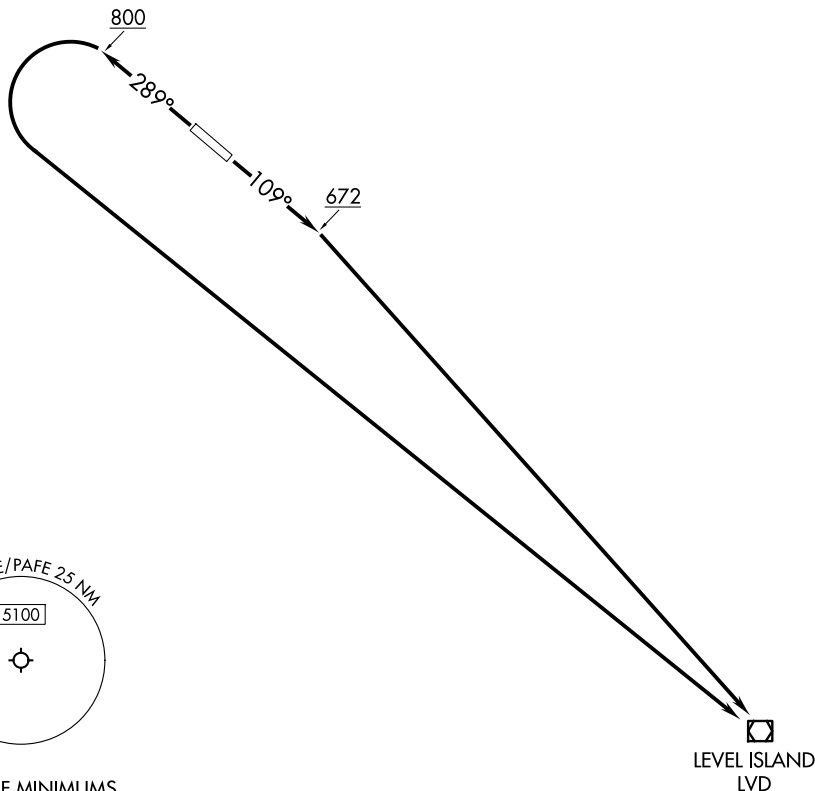


KAKE ONE DEPARTURE (OBSTACLE) (RNAV)

ANCHORAGE CENTER
132.175

RNP 1 - GPS.



TAKEOFF MINIMUMS

Rwy 11: 600-3 with minimum climb of 274' per NM to 900.

Rwy 29: 500-3 with minimum climb of 395' per NM to 900.

(CONTINUED ON FOLLOWING PAGE)

NOTE: Chart not to scale.

DEPARTURE ROUTE DESCRIPTION

TAKEOFF RUNWAY 11: Climb on heading 109° to 672, then direct LVD VOR/DME to cross LVD VOR/DME at or above MEA for route of flight.

TAKEOFF RUNWAY 29: Climb on heading 289° to 800, then climbing left turn direct LVD VOR/DME to cross LVD VOR/DME at or above MEA for route of flight.

KAKE ONE DEPARTURE (OBSTACLE) (RNAV)

TAKEOFF OBSTACLE NOTES

- Rwy 11: Trees 26' from DER, 250' left of centerline, 148' AGL/345' MSL.
 - Trees beginning 93' from DER, 3' right of centerline, up to 148' AGL/319' MSL.
 - Trees beginning 153' from DER, 16' left of centerline, up to 148' AGL/365' MSL.
 - Trees beginning 281' from DER, 123' left of centerline, up to 148' AGL/385' MSL.
 - Trees beginning 409' from DER, 103' left of centerline, up to 148' AGL/424' MSL.
 - Trees beginning 859' from DER, 210' left of centerline, up to 148' AGL/447' MSL.
 - Trees beginning 987' from DER, 316' left of centerline, up to 148' AGL/470' MSL.
 - Trees beginning 1114' from DER, 2' left of centerline, up to 148' AGL/493' MSL.
 - Trees beginning 1572' from DER, 43' right of centerline, up to 148' AGL/339' MSL.
 - Trees beginning 1895' from DER, 170' right of centerline, up to 148' AGL/345' MSL.
 - Trees beginning 2023' from DER, 64' right of centerline, up to 148' AGL/395' MSL.
 - Trees beginning 2346' from DER, 191' right of centerline, up to 148' AGL/401' MSL.
 - Trees beginning 2473' from DER, 84' right of centerline, up to 148' AGL/431' MSL.
 - Trees beginning 2796' from DER, 211' right of centerline, up to 148' AGL/447' MSL.
 - Trees beginning 2924' from DER, 104' right of centerline, up to 148' AGL/463' MSL.
 - Trees beginning 3119' from DER, 338' right of centerline, up to 148' AGL/467' MSL.
 - Trees beginning 3247' from DER, 231' right of centerline, up to 148' AGL/480' MSL.
 - Trees beginning 3299' from DER, 215' left of centerline, up to 148' AGL/519' MSL.
 - Trees beginning 3375' from DER, 124' right of centerline, up to 148' AGL/486' MSL.
 - Trees beginning 3427' from DER, 7' left of centerline, up to 148' AGL/549' MSL.
 - Trees beginning 3502' from DER, 18' right of centerline, up to 148' AGL/496' MSL.
 - Trees beginning 3698' from DER, 251' right of centerline, up to 148' AGL/503' MSL.
 - Trees beginning 3825' from DER, 145' right of centerline, up to 148' AGL/532' MSL.
 - Trees beginning 3953' from DER, 12' right of centerline, up to 148' AGL/545' MSL.
 - Trees beginning 1 NM from DER, 14' left of centerline, up to 148' AGL/559' MSL.
 - Trees beginning 1 NM from DER, 32' right of centerline, up to 148' AGL/555' MSL.
 - Trees beginning 1.9 NM from DER, 2314' right of centerline, up to 148' AGL/568' MSL.
 - Trees beginning 2.3 NM from DER, 3311' left of centerline, up to 148' AGL/637' MSL.
 - Trees beginning 2.4 NM from DER, 3418' left of centerline, up to 148' AGL/696' MSL.
- Rwy 29: Trees 21' from DER, 353' left of centerline, 148' AGL/280' MSL.
 - Trees beginning 28' from DER, 7' right of centerline, up to 148' AGL/290' MSL.
 - Trees beginning 88' from DER, 13' left of centerline, up to 148' AGL/293' MSL.
 - Trees beginning 1124' from DER, 3' right of centerline, up to 148' AGL/309' MSL.
 - Trees beginning 3316' from DER, 23' right of centerline, up to 148' AGL/316' MSL.
 - Trees beginning 3639' from DER, 44' right of centerline, up to 148' AGL/322' MSL.
 - Trees beginning 3962' from DER, on centerline, up to 148' AGL/336' MSL.
 - Trees beginning 5380' from DER, 233' right of centerline, up to 148' AGL/339' MSL.
 - Trees beginning 5508' from DER, 126' right of centerline, up to 148' AGL/342' MSL.
 - Trees beginning 5635' from DER, 20' right of centerline, up to 148' AGL/352' MSL.
 - Trees beginning 5831' from DER, 40' right of centerline, up to 148' AGL/365' MSL.
 - Trees 5876' from DER, 86' left of centerline, 148' AGL/299' MSL.
 - Tower, trees beginning 1 NM from DER, 65' left of centerline, up to 191' AGL/328' MSL.
 - Trees beginning 1 NM from DER, 1529' right of centerline, up to 148' AGL/391' MSL.
 - Trees beginning 1.1 NM from DER, 1549' right of centerline, up to 148' AGL/414' MSL.
 - Trees beginning 1.2 NM from DER, 2144' right of centerline, up to 148' AGL/437' MSL.
 - Trees beginning 1.3 NM from DER, 2038' right of centerline, up to 148' AGL/486' MSL.
 - Trees beginning 1.4 NM from DER, 1887' right of centerline, up to 148' AGL/542' MSL.
 - Trees beginning 2 NM from DER, 3287' right of centerline, up to 148' AGL/545' MSL.
 - Trees beginning 2.3 NM from DER, 2477' right of centerline, up to 148' AGL/598' MSL.
 - Trees beginning 2.5 NM from DER, 2371' right of centerline, up to 148' AGL/605' MSL.

AK, 20 FEB 2025 to 17 APR 2025

AK, 20 FEB 2025 to 17 APR 2025

KAKE ONE DEPARTURE (OBSTACLE) (RNAV)