

APP CRS 094°	Rwy Idg TDZE Apt Elev	4000 166 172
------------------------	-----------------------------	-----------------------------------------

RNAV (GPS) RWY 11

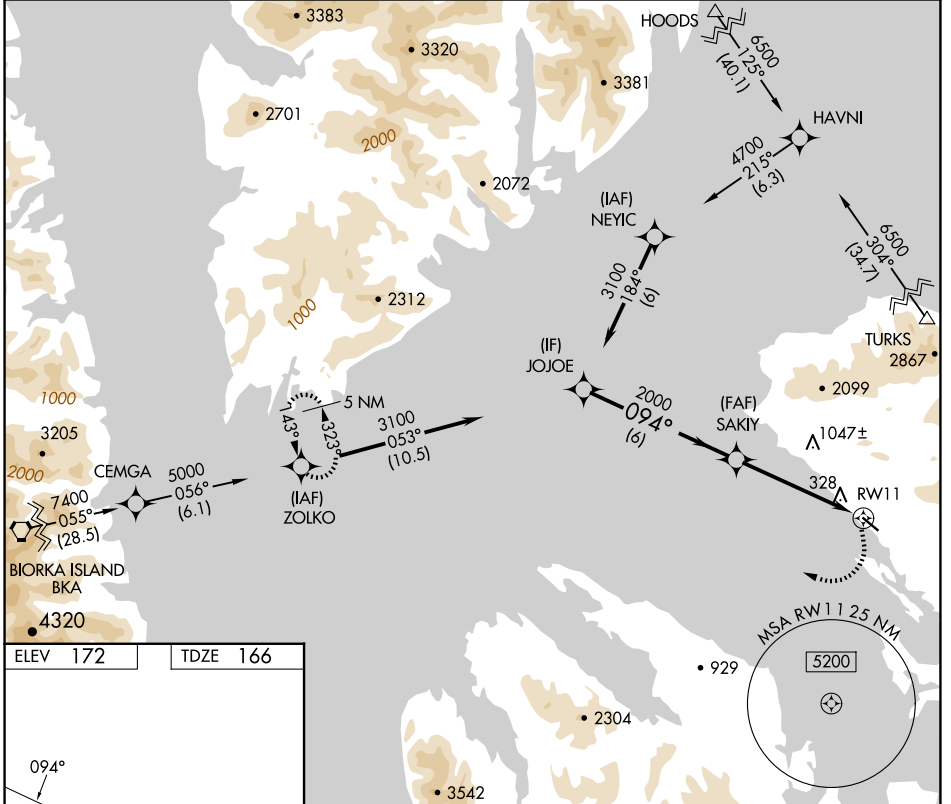
KAKE (AFE)(PAF'E)

RNP APCH.

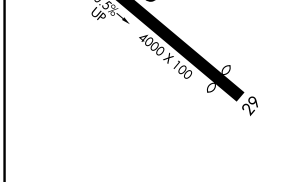
▼ Circling NA north of Rwy 11-29. When local altimeter setting not received, use Petersburg James A Johnson altimeter setting and increase all MDAs 100 feet.
▲ Circling Rwy 29 NA at night. Rwy 11 helicopter visibility reduction below 3/4 SM NA.

MISSED APPROACH: Climbing right turn to 5000 direct ZOLKO and hold.

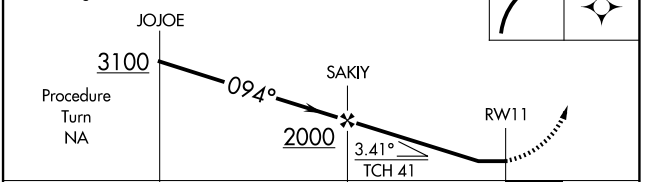
AWOS-3P 135.25	ANCHORAGE CENTER 132.175	SITKA RADIO 122.65 121.3	CTAF 122.9 0
--------------------------	------------------------------------	------------------------------------	------------------------



ELEV 172	TDZE 166
----------	----------



VGSI and descent angles not coincident (VGSI Angle 3.00/TCH 41).



CATEGORY	A	B	C	D
LNAV MDA	1120-1¼ 954 (1000-1¼)	1120-1½ 954 (1000-1½)	1120-3 954 (1000-3)	NA
CIRCLING	1120-1¼ 948 (1000-1¼)	1120-1½ 948 (1000-1½)	1120-3 948 (1000-3)	NA

REIL Rwy 11 **0**
MIRL Rwy 11-29 **0**

AK, 20 FEB 2025 to 17 APR 2025

AK, 20 FEB 2025 to 17 APR 2025