

LOC/DME I-VDF 111.35 Chan 50 (Y)	APP CRS 226°	Rwy Idg TDZE Apt Elev	4200 21 21
---	------------------------	-----------------------------	---------------------------------------

ILS or LOC RWY 23

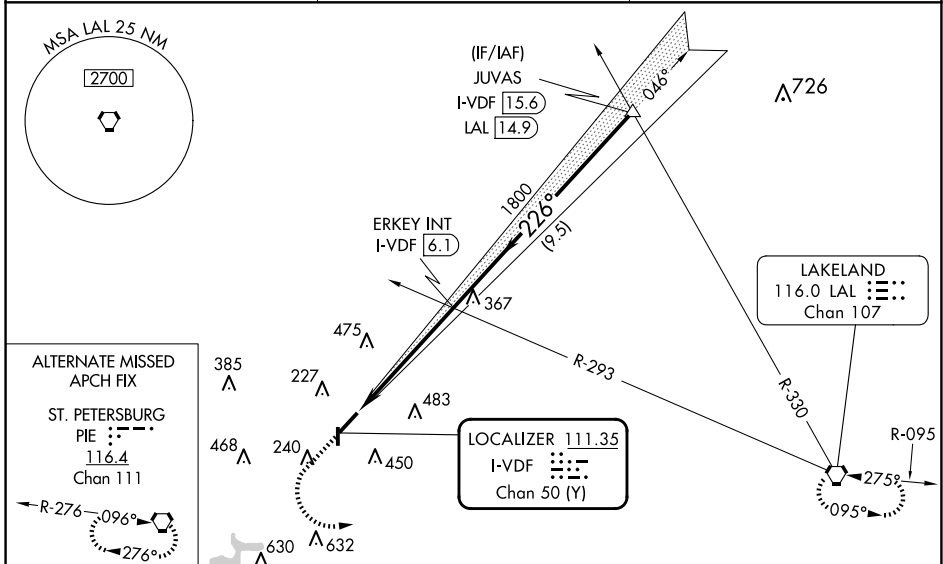
TAMPA EXEC (VDF)

⚠ When local altimeter setting not received, use Tampa Intl altimeter setting and increase S-ILS 23 DA to 323; increase all MDA 40 feet and S-LOC and Circling Cat C visibilities ¼ SM. For inop MALSRR when using Tampa Intl altimeter setting, increase S-LOC 23 Cat C visibility to 1½. Inop table does not apply to S-ILS 23 and S-LOC 23 Cats A/B. Rwy 23 helicopter visibility reduction below ¾ SM NA. Circling Rwy 18, 36 NA at night.

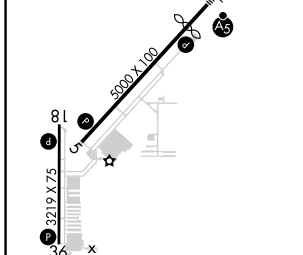


MISSED APPROACH: Climb to 800 then climbing left turn to 2000 direct LAL VORTAC and hold.

AWOS-3 121.125	TAMPA APP CON 119.9 290.3	UNICOM 122.7 (CTAF) 0
--------------------------	-------------------------------------	---------------------------------



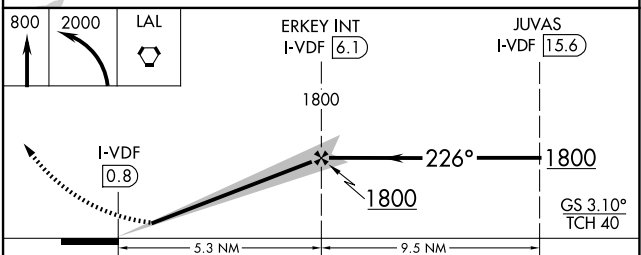
ELEV 21	D	TDZE 21
---------	----------	---------



REIL Rws 5, 18, and 36
MIRL Rws 5-23 and 18-36

FAF to MAP 5.3 NM

Knots	60	90	120	150	180
Min:Sec	5:18	3:32	2:39	2:07	1:46



CATEGORY	A	B	C	D
S-ILS 23	298-1	277 (300-1)		NA
S-LOC 23	560-1	539 (600-1)		NA
CIRCLING	560-1 539 (600-1)	760-1 739 (800-1)	800-2¼ 779 (800-2¼)	NA

SE-3, 20 FEB 2025 to 20 MAR 2025

SE-3, 20 FEB 2025 to 20 MAR 2025