

WAAS CH 73010 W09A	APP CRS 091°	Rwy Idg 4100 TDZE 3669 Apt Elev 3703
--	------------------------	---

RNAV (GPS) Z RWY 9

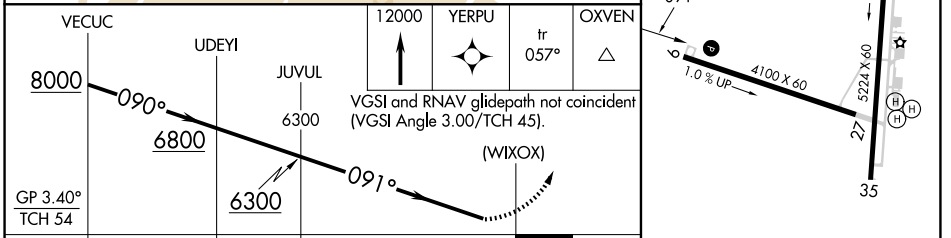
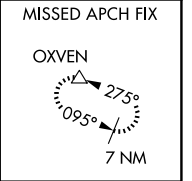
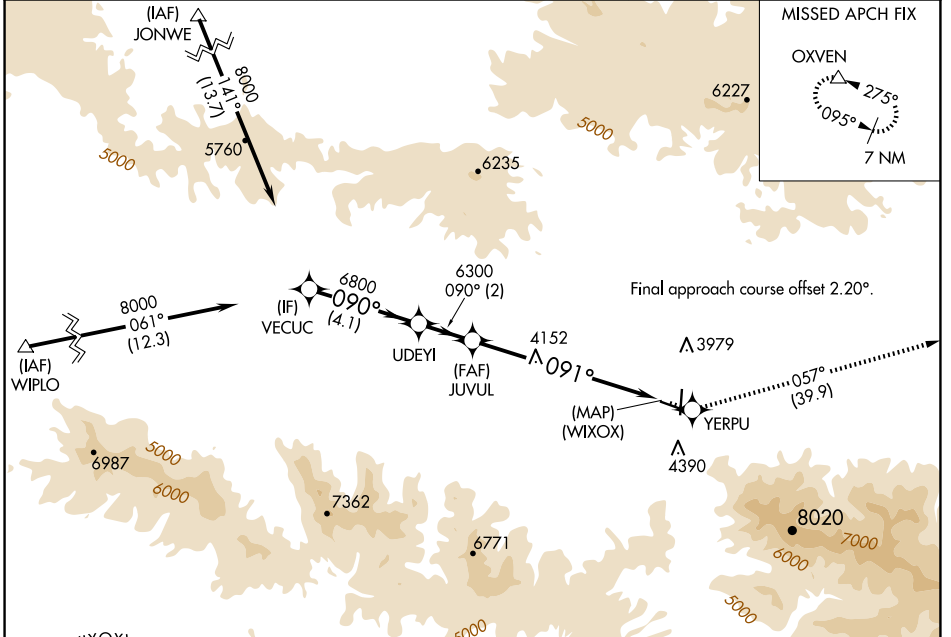
GRANT COUNTY RGNL/OGILVIE FLD (GCD)

RNP APCH - GPS.

▼ When local altimeter setting not received, procedure NA.
Rwy 9 helicopter visibility reduction below 3/4 SM NA.

MISSED APPROACH: Climb to 12000 direct YERPU and on track 057° to OXVEN and hold, continue climb-in-hold to 12000.

AWOS-3 118.375	SEATTLE CENTER 128.15 257.75	UNICOM 122.8 (CTAF) 0
--------------------------	--	--



ELEV 3703		TDZE 3669	
CATEGORY	A	B	D
LPV DA	4269-2 600 (600-2)		NA

NW-1, 20 FEB 2025 to 20 MAR 2025

NW-1, 20 FEB 2025 to 20 MAR 2025