

RNAV (GPS) RWY 23

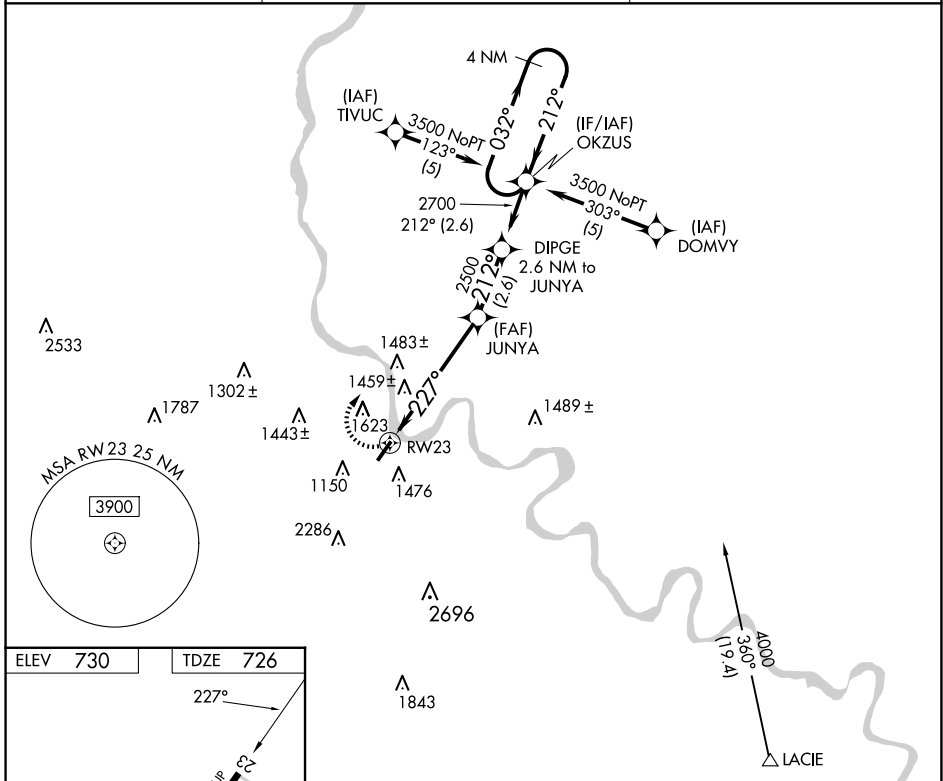
BRADFORD COUNTY (N27)

APP CRS 227°	Rwy Idg TDZE Apt Elev	4301 726 730
------------------------	-----------------------------	---

NA When local altimeter setting not received, use Elmira altimeter setting and increase all MDAs 40 feet. GPS or RNP-0.3 required. DME/DME RNP-0.3 NA. Night landing: RWY 5 NA. Helicopter visibility reduction below 3/4 SM NA.

MISSED APPROACH:
Climbing right turn to 3500 direct OKZUS WP and hold.

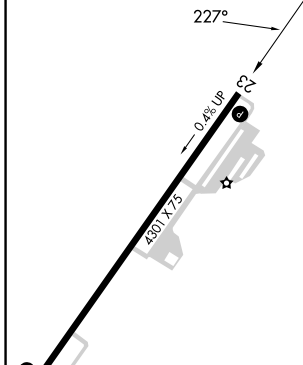
AWOS-3 119.925	BINGHAMTON APP CON ★ 118.6 257.625	UNICOM 123.0 (CTAF)
--------------------------	--	-------------------------------



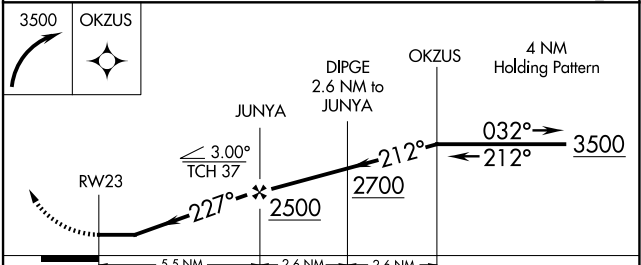
NE-4, 20 FEB 2025 to 20 MAR 2025

NE-4, 20 FEB 2025 to 20 MAR 2025

ELEV 730	TDZE 726
----------	----------



REIL Rwy 5 and 23 1
MIRL Rwy 5-23 1



CATEGORY	A	B	C	D
LNAV MDA	1800-1¼ 1074 (1100-1¼)	1800-1½ 1074 (1100-1½)	NA	
CIRCLING	2020-1¼ 1290 (1300-1¼)	2020-1½ 1290 (1300-1½)	NA	

RNAV (GPS) RWY 23