

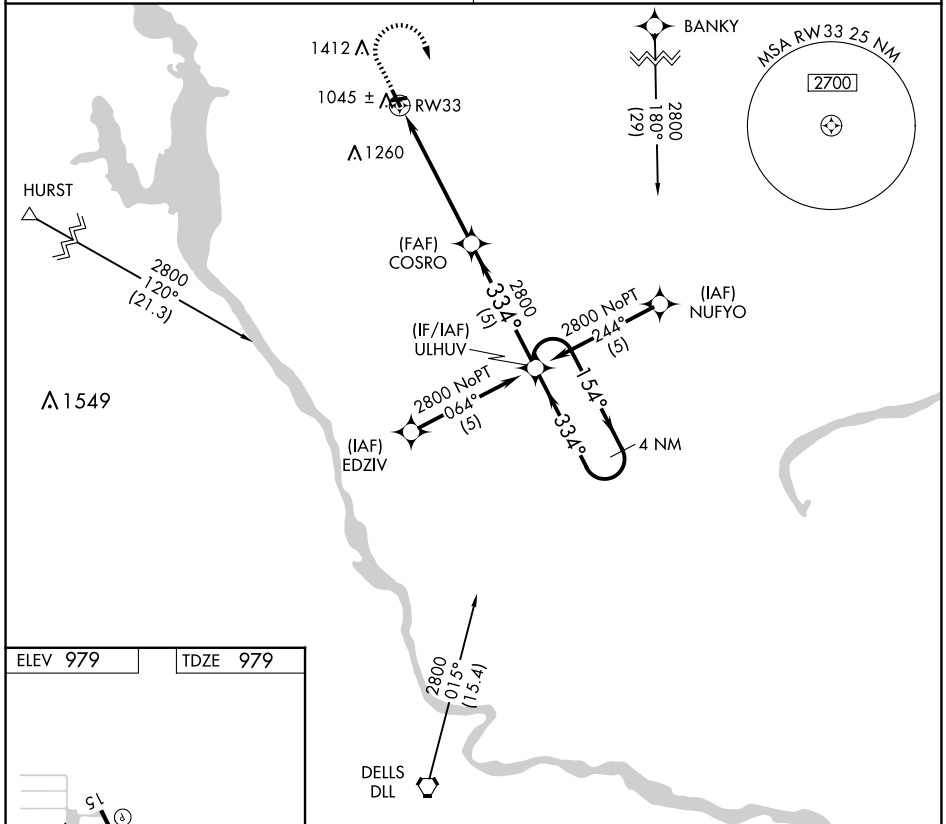
APP CRS 334°	Rwy Idg 3398
	TDZE 979
	Apt Elev 979

RNAV (GPS) RWY 33

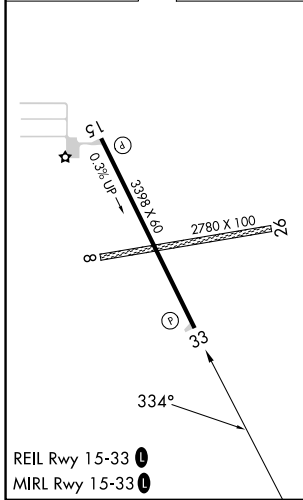
ADAMS COUNTY LEGION FLD (63C)

RNP APCH.	Procedure NA at night. Rwy 33 helicopter visibility reduction below 1 SM NA.	MISSED APPROACH: Climb to 2000 then climbing right turn to 2800 direct ULHUV and hold.
NA	Circling NA to Rwy 8 and 26. Use Baraboo Wisconsin Dells altimeter setting.	

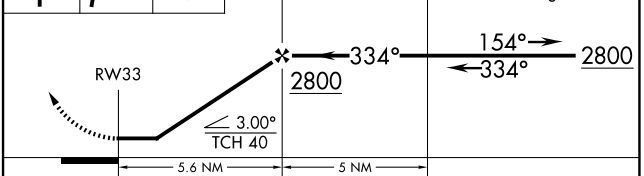
VOLK APP CON★ 135.25 244.875	CTAF 122.9
--	----------------------



ELEV 979	TDZE 979
----------	----------



2000	2800	ULHUV	VGSI and descent angles not coincident (VGSI Angle 3.00°/TCH 20).	4 NM Holding Pattern
↑	↷	✧	COSRO	ULHUV



CATEGORY	A	B	C	D
LNAV MDA	1500-1	521 (600-1)		NA
CIRCLING	1640-1 661 (700-1)	1780-1¼ 801 (900-1¼)		NA

EC-3, 20 FEB 2025 to 20 MAR 2025

EC-3, 20 FEB 2025 to 20 MAR 2025