

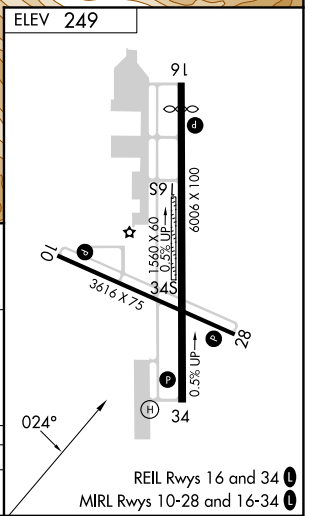
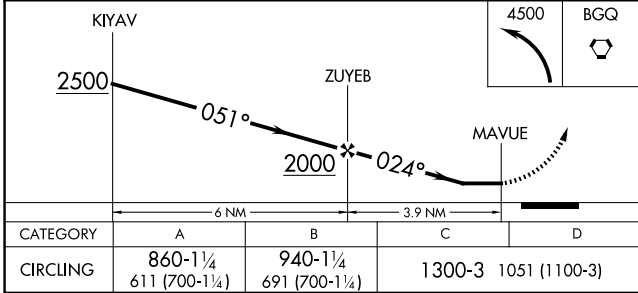
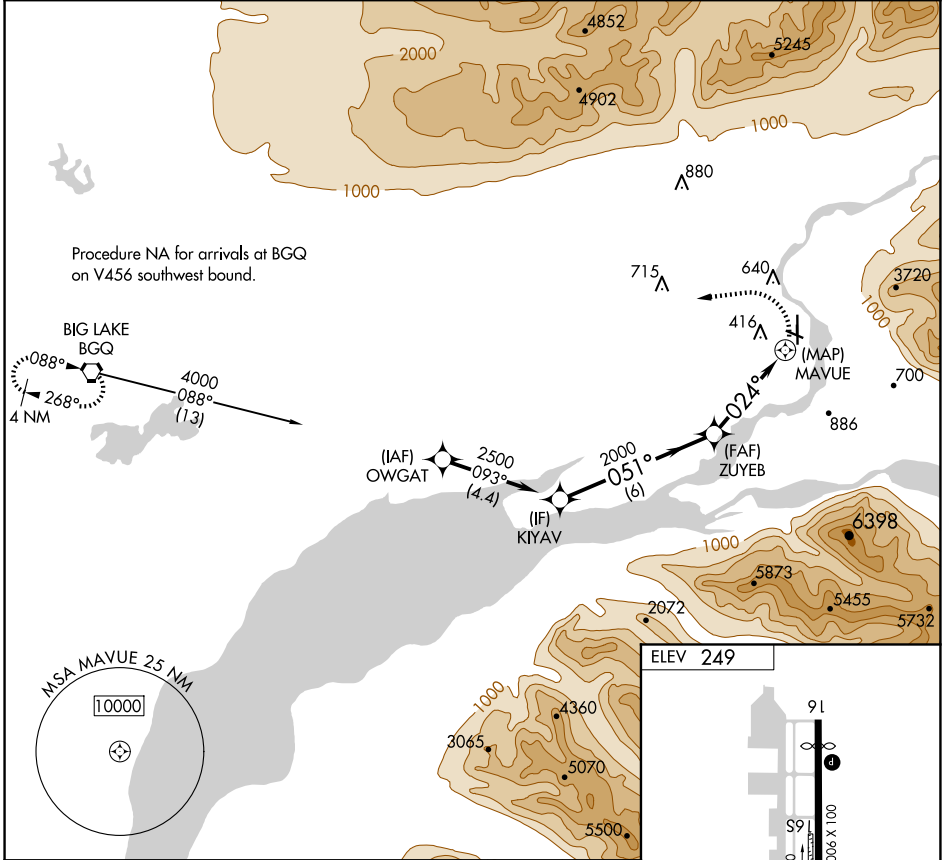
APP CRS <b>024°</b>	Rwy Idg TDZE Apt Elev	<b>N/A</b> <b>N/A</b> <b>249</b>
------------------------	-----------------------------	--

# RNAV (GPS)-A

WARREN "BUD" WOODS PALMER MUNI (PAQ) (PAAQ)

RNP APCH.	MISSED APPROACH: Climbing left turn to 4500 direct BGQ VORTAC and hold.
<p>▼ Circling NA northeast of Rwy 16-28. ▲ Procedure NA at night.</p>	

AFIS <b>134.75</b>	ANCHORAGE APP CON <b>118.6 290.5</b>	PALMER RADIO <b>123.6 (CTAF) 122.4</b>
-----------------------	---	---



AK, 20 FEB 2025 to 17 APR 2025

AK, 20 FEB 2025 to 17 APR 2025

# RNAV (GPS)-A