

WAAS CH 69536 W22A	APP CRS 218°	Rwy ldg TDZE Apt Elev	3700 354 354
--	------------------------	-----------------------------	---

RNAV (GPS) RWY 22

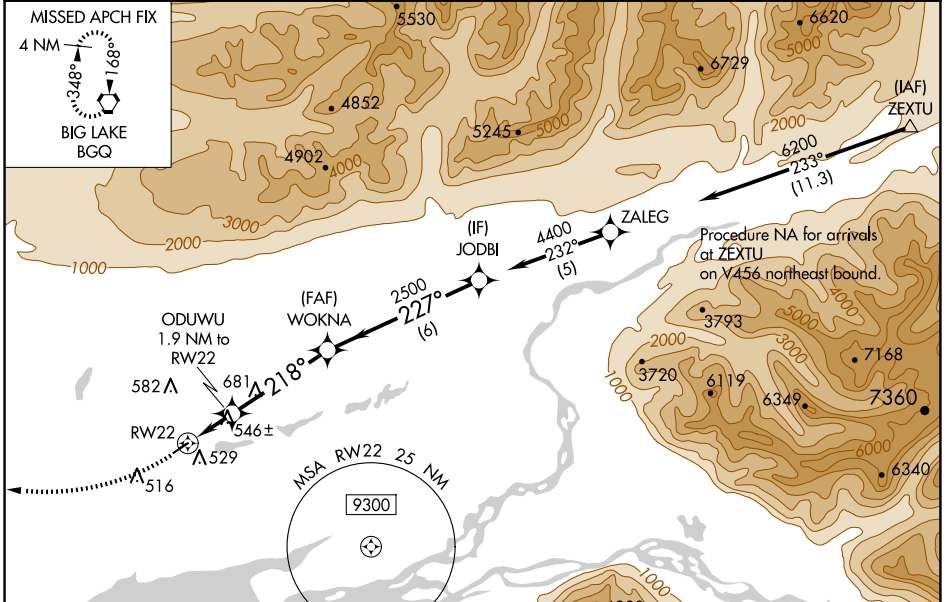
WASILLA (IYS) (PAWS)

RNP APCH.

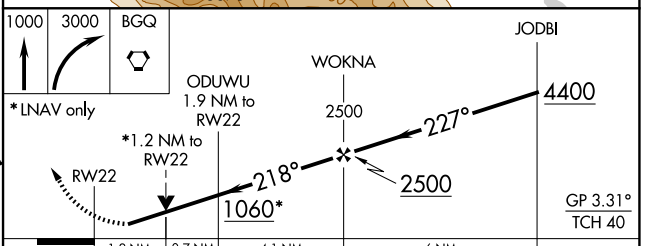
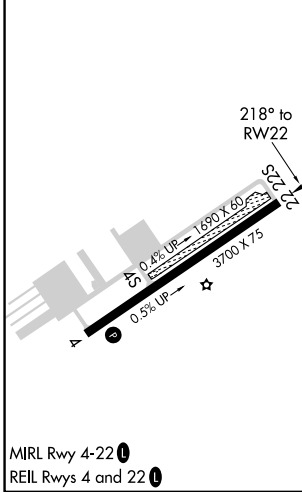
⚠ Circling NA to Rwy 4S and 22S. Baro-VNAV and VDP NA when using Palmer altimeter setting. Rwy 22 helicopter visibility reduction below 3/4 SM NA. For uncompensated Baro-VNAV systems, LNAV/VNAV NA below -25°C or above 54°C. When local altimeter setting not received, use Palmer altimeter setting and increase all DA 46 feet, MDA 60 feet and all visibilities 1/8 mile.

MISSED APPROACH:
Climb to 1000 then climbing right turn to 3000 direct BGQ VORTAC and hold.

AWOS-3P 135.25	ANCHORAGE APP CON 119.1 363.2	CTAF 122.8
--------------------------	---	----------------------



ELEV 354	TDZE 354
----------	----------



CATEGORY	A	B	C	D
LPV DA	604-3/4	250 (300-3/4)		NA
LNAV/VNAV DA	821-1 1/2	467 (500-1 1/2)		NA
LNAV MDA	800-1	446 (500-1)		NA
C CIRCLING	1000-1	646 (700-1)		NA

AK, 20 FEB 2025 to 17 APR 2025

AK, 20 FEB 2025 to 17 APR 2025