

WAAS CH 69507 W06A	APP CRS 059°	Rwy Idg 3998 TDZE 132 Apt Elev 132
--	------------------------	---

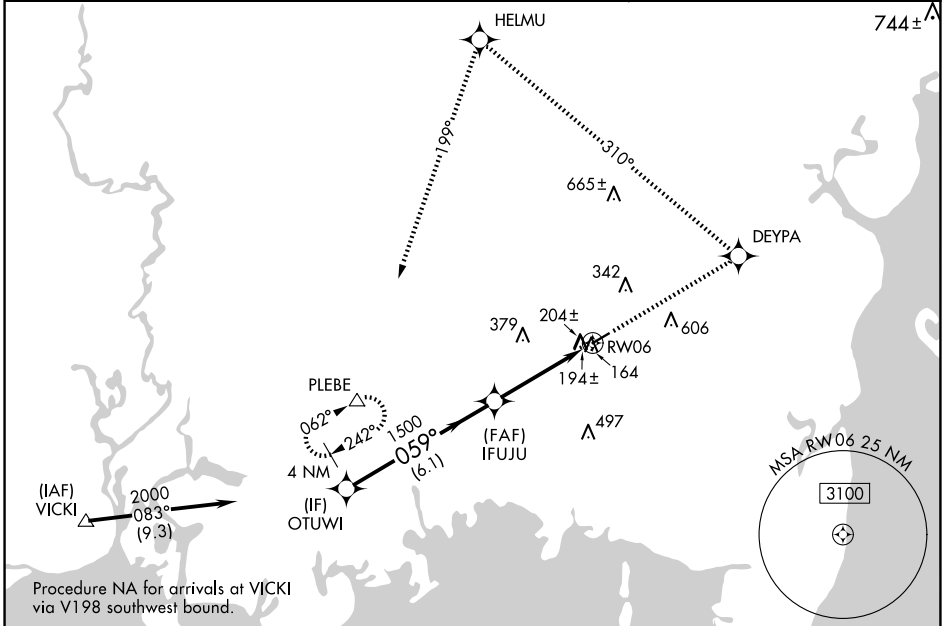
RNAV (GPS) RWY 6

ST ELMO (2R.5)

NA DME/DME RNP-0.3 NA. Visibility reduction by helicopters NA. Use Mobile Rgnl altimeter setting; when not received use Pascagoula altimeter setting and increase DA to 483 feet and all MDA 20 feet.

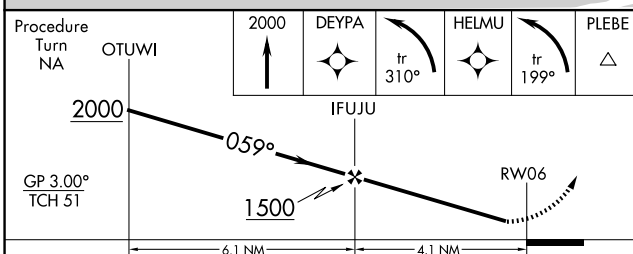
MISSED APPROACH: Climb to 2000 direct DEYPA and left turn via 310° track to HELMU and left turn via 199° track to PLEBE and hold.

MOBILE APP CON ★ 121.0 307.1	HOUSTON CENTER 127.65 285.475	CTAF 122.90
--	---	-----------------------

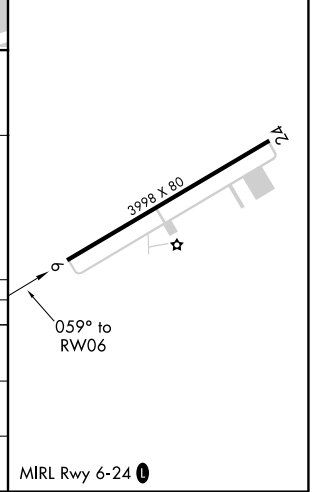


Procedure NA for arrivals at VICKI via V198 southwest bound.

ELEV 132	TDZE 132
----------	----------



CATEGORY	A	B	C	D
LPV DA	475-1¼	343 (400-1¼)		NA
LNAV MDA	540-1	408 (500-1)	540-1¼ 408 (500-1¼)	NA
CIRCLING	720-1	588 (600-1)	960-2½ 828 (900-2½)	NA



MIRL Rwy 6-24 **0**

SE-4, 20 FEB 2025 to 20 MAR 2025

SE-4, 20 FEB 2025 to 20 MAR 2025