

WAAS CH <b>99437</b> <b>W13A</b>	APP CRS <b>124°</b>	Rwy Idg <b>3300</b> TDZE <b>993</b> Apt Elev <b>993</b>
----------------------------------------	------------------------	---------------------------------------------------------------

# RNAV (GPS) RWY 13

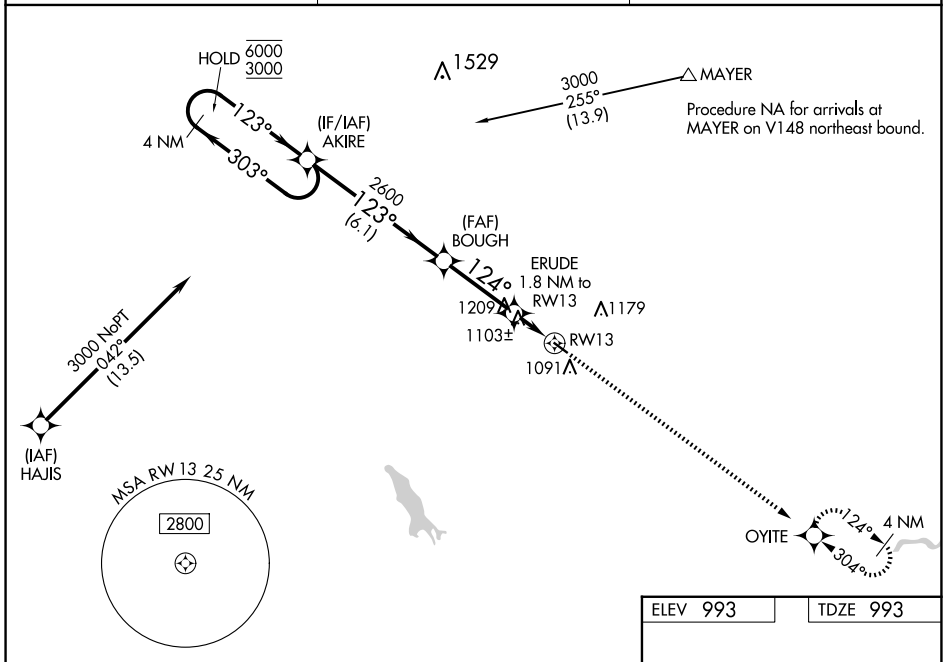
GLENCOE MUNI (GYL)

RNP APCH - GPS.

⚠ For uncompensated Baro-VNAV systems, LNAV/VNAV NA below -16°C or above 54°C. Baro-VNAV and VDP NA when using Hutchinson altimeter setting. Rwy 13 helicopter visibility reduction below 3/4 SM NA. When local altimeter setting not received, use Hutchinson altimeter setting; increase LPV DA to 1317; increase LNAV/VNAV DA to 1403; and increase all MDA 60 feet.

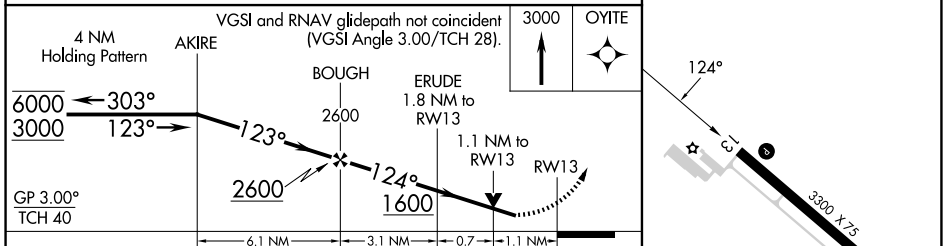
MISSED APPROACH: Climb to 3000 direct OYITE and hold.

AWOS-3 <b>119.625</b>	MINNEAPOLIS APP CON <b>134.7 284.7</b>	UNICOM <b>122.8 (CTAF) 0</b>
--------------------------	-------------------------------------------	---------------------------------



NC-1, 20 FEB 2025 to 20 MAR 2025

NC-1, 20 FEB 2025 to 20 MAR 2025



CATEGORY	A	B	C	D
LPV DA	1274-1	281 (300-1)		NA
LNAV/VNAV DA	1360-1	367 (400-1)		NA
LNAV MDA	1360-1	367 (400-1)		NA
<b>C</b> CIRCLING	1420-1 427 (500-1)	1480-1 487 (500-1)		NA

ELEV 993	TDZE 993
----------	----------

REIL Rws 13 and 31 0  
MIRL Rwy 13-31 0