

WAAS CH 48937 W31A	APP CRS 304°	Rwy Idg TDZE Apt Elev	3300 992 993
--	------------------------	-----------------------------	---

RNAV (GPS) RWY 31

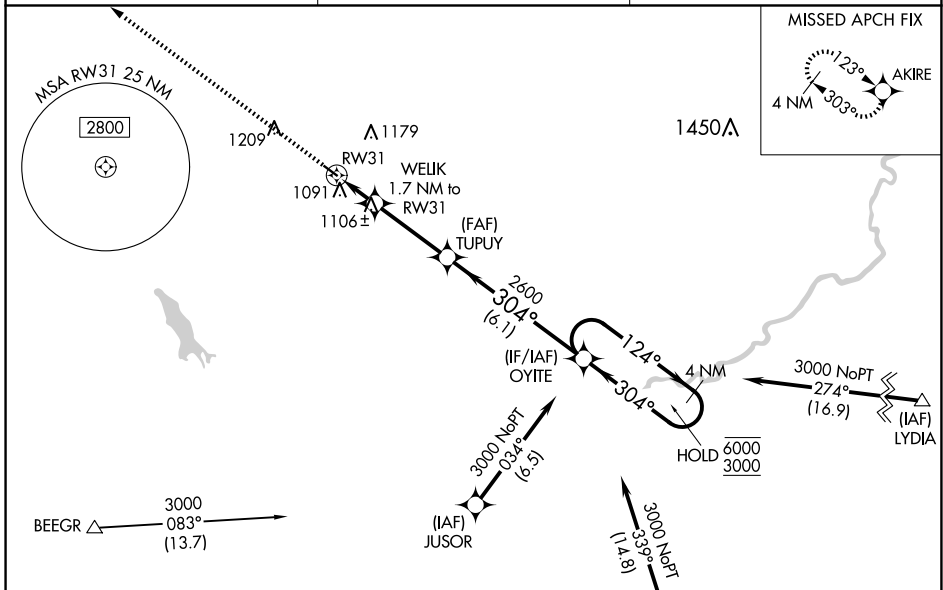
GLENCOE MUNI (GYL)

RNP APCH - GPS.

⚠ For uncompensated Baro-VNAV systems, LNAV/VNAV NA below -16°C or above 54°C. Baro-VNAV and VDP NA when using Hutchinson altimeter setting. When local altimeter setting not received, use Hutchinson altimeter setting: increase LPV DA to 1285 feet; increase LNAV/VNAV DA to 1296 feet; increase all MDAs 60 feet.

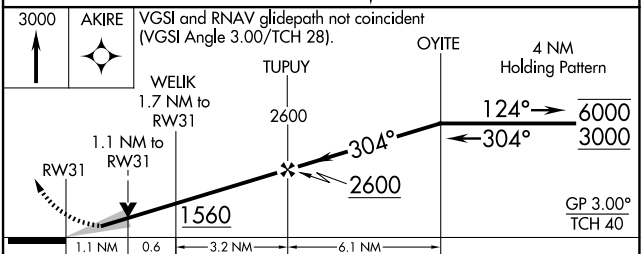
MISSED APPROACH: Climb to 3000 direct AKIRE and hold.

AWOS-3 119.625	MINNEAPOLIS APP CON 134.7 284.7	UNICOM 122.8 (CTAF) 0
--------------------------	---	--

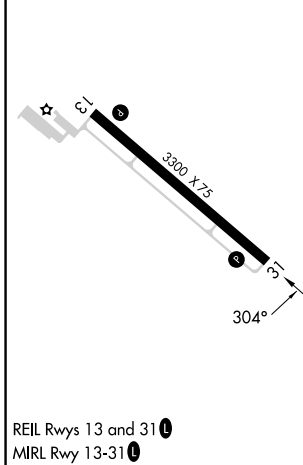


ELEV 993	TDZE 992
----------	----------

Procedure NA for arrivals at ZANNA on T400 southwest bound.



	A	B	C	D
LPV DA	1242-7/8	250 (300-7/8)		NA
LNAV/VNAV DA	1253-7/8	261 (300-7/8)		NA
LNAV MDA	1360-1	368 (400-1)		NA
C CIRCLING	1420-1 427 (500-1)	1480-1 487 (500-1)		NA



NC-1, 20 FEB 2025 to 20 MAR 2025

NC-1, 20 FEB 2025 to 20 MAR 2025