

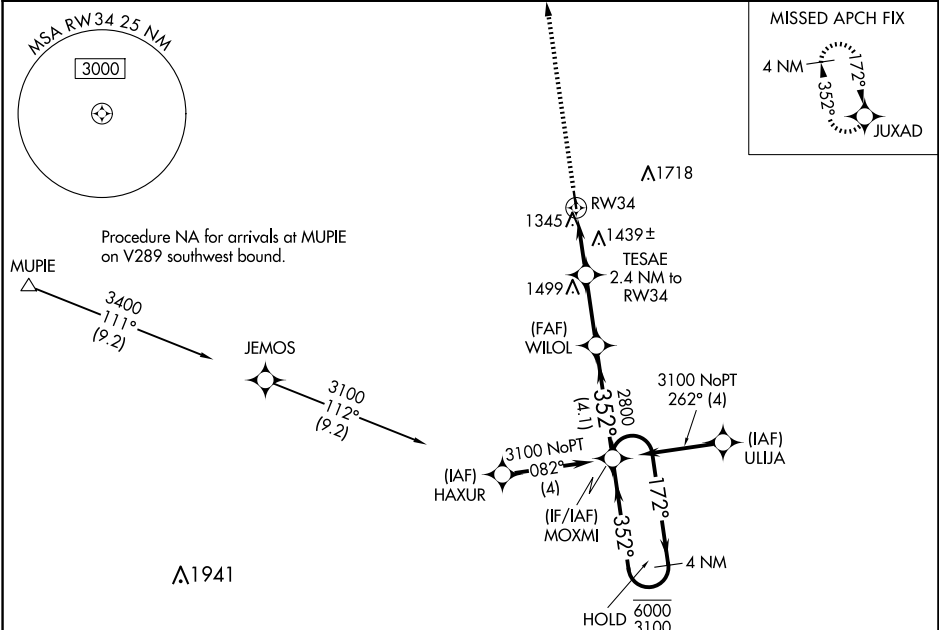
WAAS CH 72728 W34A	APP CRS 352°	Rwy Idg TDZE Apt Elev	3500 1191 1195
--	------------------------	-----------------------------	---

RNAV (GPS) RWY 34

HOUSTON MEML (M48)

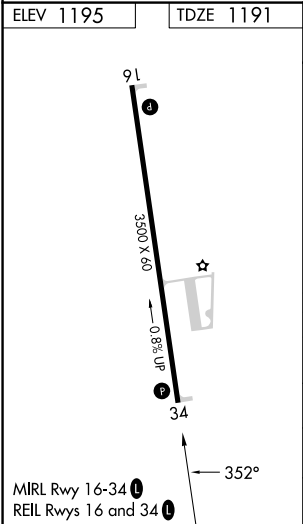
RNP APCH-GPS.	MISSED APPROACH: Climb to 3400 direct JUXAD and hold.
<p>Baro-VNAV NA. Use Fort Leonard Wood altimeter setting, when not received use West Plains altimeter setting.</p>	

TBN ASOS 118.7 229.4	KANSAS CITY CENTER 128.35 284.675	CTAF 122.9 0
--------------------------------	---	------------------------



NC-3, 20 FEB 2025 to 20 MAR 2025

NC-3, 20 FEB 2025 to 20 MAR 2025



3400	JUXAD	VGS1 and RNAV glidepath not coincident (VGS1 Angle 4.00/TCH 41).	
↑	✦	MOXMI	4 NM Holding Pattern
		WILOL	2800
		TESAE	2.4 NM to RW34
		RW34	1980
			2800
			172° → 6000
			← 352° 3100
			GP 3.00° TCH 40
			2.4 NM 2.6 NM 4.1 NM
CATEGORY	A	B	C
LPV DA	1509-1	318 (400-1)	NA
LNAV/VNAV DA	1740-1 5/8	549 (600-1 5/8)	NA
LNAV MDA	1740-1	549 (600-1)	NA
CIRCLING	1760-1 565 (600-1)	1880-1 685 (700-1)	NA