

WAAS CH <b>78036</b> <b>W02A</b>	APP CRS <b>014°</b>	Rwy Idg TDZE Apt Elev	<b>3740</b> <b>163</b> <b>175</b>
--	------------------------	-----------------------------	---

# RNAV (GPS) RWY 2

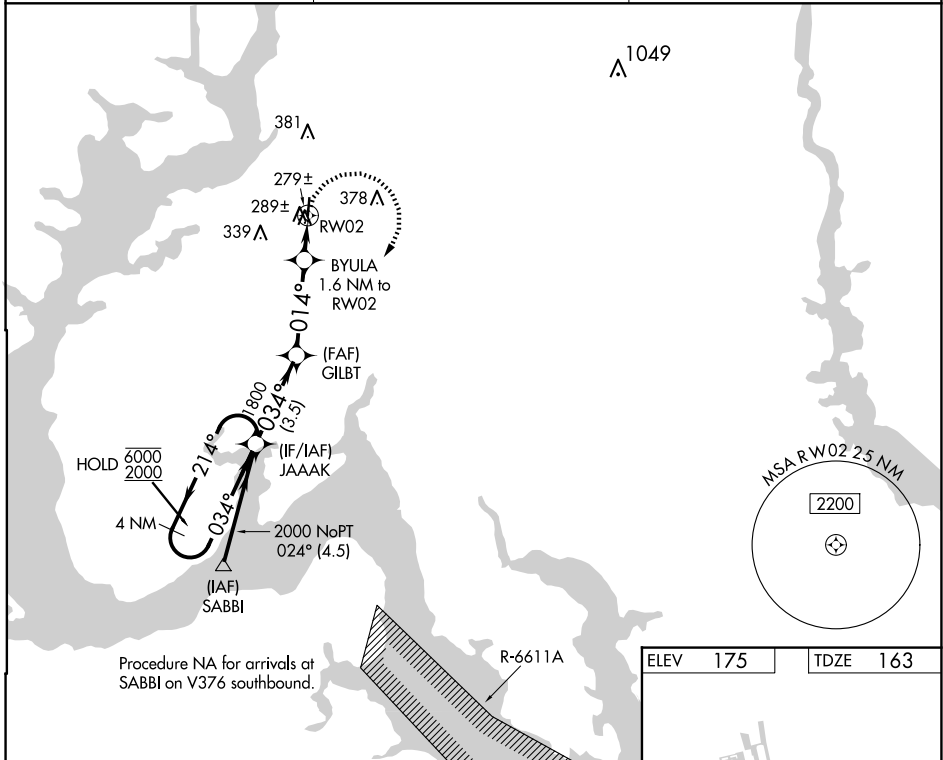
MARYLAND (2W5)

RNP APCH.

**NA** Circling Rwy 20 NA at night. Rwy 2 helicopter visibility reduction below 3/4 SM NA. Use Ronald Reagan Washington Ntl altimeter setting.

MISSED APPROACH: Climbing right turn to 2000 direct JAAAK and hold.

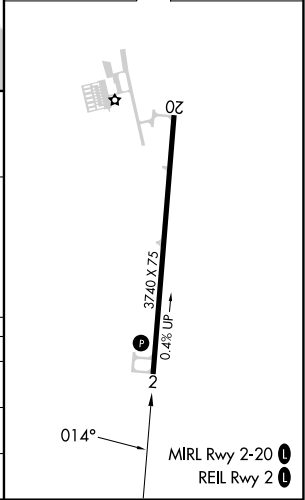
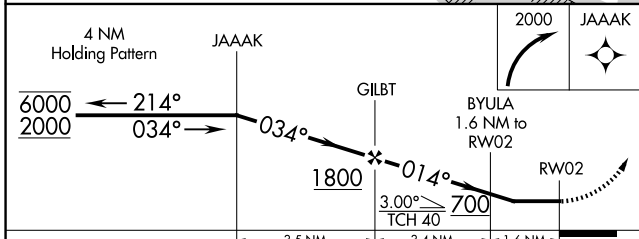
DCA ASOS <b>132.65</b>	POTOMAC APP CON <b>124.7 338.2</b>	UNICOM <b>122.7</b> (CTAF) <b>0</b>
---------------------------	---------------------------------------	--



NE-3, 20 FEB 2025 to 20 MAR 2025

NE-3, 20 FEB 2025 to 20 MAR 2025

ELEV	175	TDZE	163
------	-----	------	-----



CATEGORY	A	B	C	D
LP MDA	600-1	437 (500-1)		NA
LNAV MDA	620-1	457 (500-1)		NA
<b>C</b> CIRCLING	700-1	525 (600-1)		NA