

APP CRS	Rwy Idg	4000
179°	TDZE	1092
	Apt Elev	1092

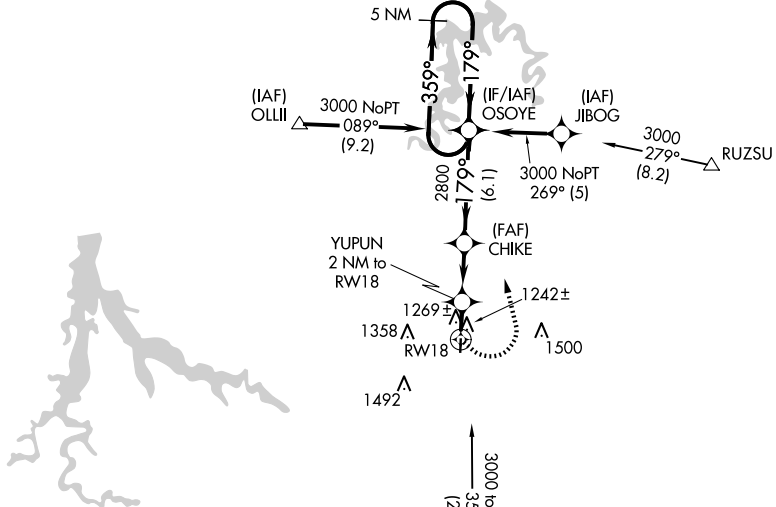
RNAV (GPS) RWY 18

BOLIVAR MUNI (M17)

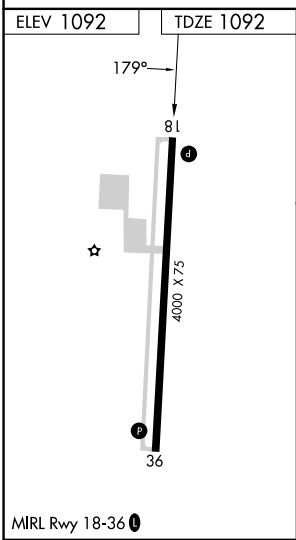
RNP APCH - GPS.		MISSED APPROACH: Climbing left turn to 3000 direct OSOYE and hold.
<p>▼ Rwy 18 helicopter visibility reduction below 1 SM NA.</p> <p>▲ NA Use Springfield-Branson Ntl altimeter setting. Straight-in and Circling Rwy 18 NA at night.</p>	<p>SPRINGFIELD APP CON</p> <p>124.95 318.2</p>	
		<p>UNICOM</p> <p>123.0 (CTAF) 1</p>

NC-3, 20 FEB 2025 to 20 MAR 2025

NC-3, 20 FEB 2025 to 20 MAR 2025



Holding not required for arrivals on SGF VORTAC airway radials 075 CW 272.



3000	OSOYE	VGSI and descent angles not coincident (VGSI Angle 3.75/TCH 40).	5 NM Holding Pattern	
	<p>YUPUN 2 NM to RWY 18</p> <p>CHIKE</p> <p>OSOYE</p>	<p>3.04° TCH 38</p> <p>1760</p> <p>2800</p> <p>179°</p> <p>359°</p> <p>3000</p>	<p>2 NM</p> <p>3.2 NM</p> <p>6.1 NM</p>	
CATEGORY	A	B	C	D
LNAV MDA	1600-1	508 (600-1)	1600-1 3/8 508 (600-1 3/8)	NA
CIRCLING	1660-1	568 (600-1)	1740-1 3/4 648 (700-1 3/4)	NA