

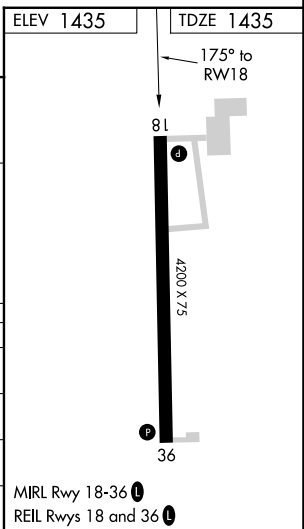
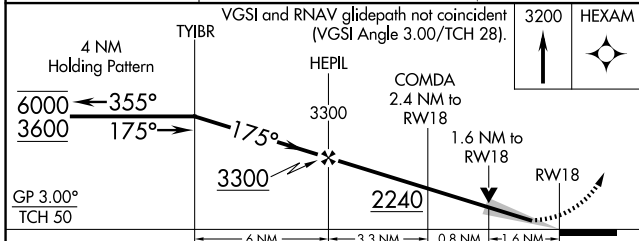
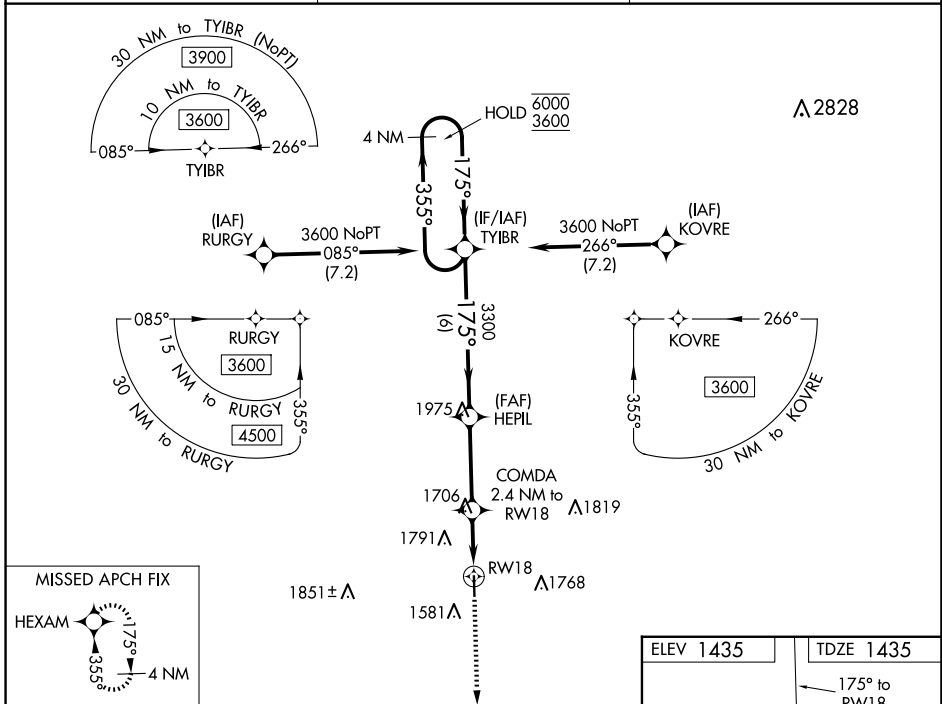
WAAS CH 86317 W18A	APP CRS 175°	Rwy Idg TDZE Apt Elev	4200 1435 1435
---------------------------------	------------------------	-----------------------------	---

RNAV (GPS) RWY 18

QUENTIN AANENSON FLD (L.Y.V)

RNP APCH-GPS.	MISSED APPROACH: Climb to 3200 direct HEXAM and hold.
▼ For uncompensated Baro-VNAV systems, LNAV/VNAV ▲ NA below -17°C or above 54°C.	

AWOS-3 119.825	SIOUX FALLS APP CON * 125.8 284.725	UNICOM 122.7(CTAF) 0
--------------------------	---	--------------------------------



CATEGORY	A	B	C	D
LPV DA	1635-1		200 (200-1)	
LNAV/VNAV DA	1847-1½		412 (500-1½)	
LNAV MDA	1960-1	525 (600-1)	1960-1½	525 (600-1½)
CIRCLING	1960-1 525 (600-1)	2160-1 725 (800-1)	2360-2¾ 925 (1000-2¾)	2360-3 925 (1000-3)

MIRL Rwy 18-36
REIL Rwy 18 and 36

NC-1, 20 FEB 2025 to 20 MAR 2025

NC-1, 20 FEB 2025 to 20 MAR 2025