

WAAS CH 40117 W36A	APP CRS 355°	Rwy Idg 4200 TDZE 1433 Apt Elev 1435
--	------------------------	---

RNAV (GPS) RWY 36

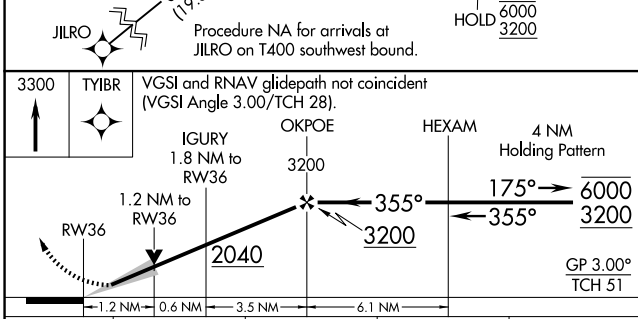
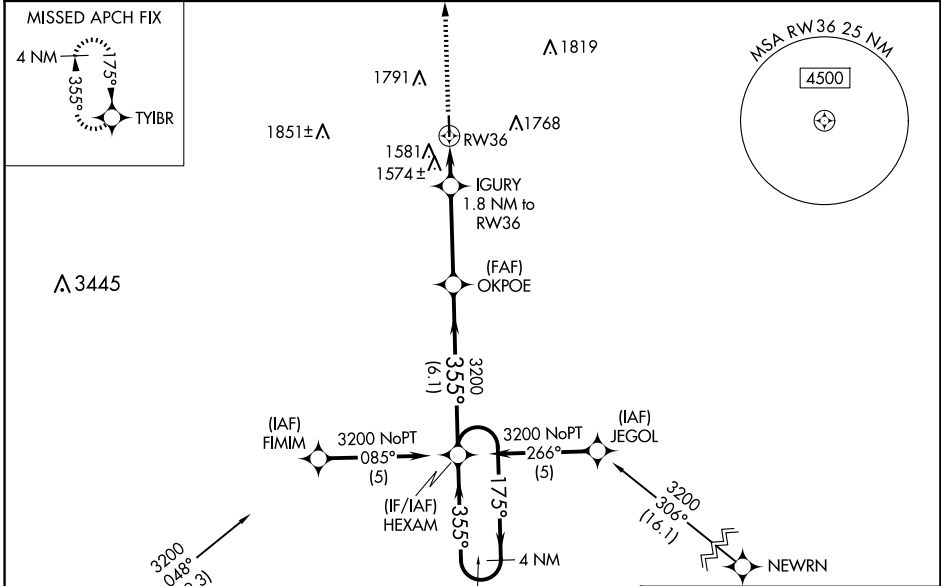
QUENTIN AANENSON FLD (L.Y.V)

RNP APCH - GPS.

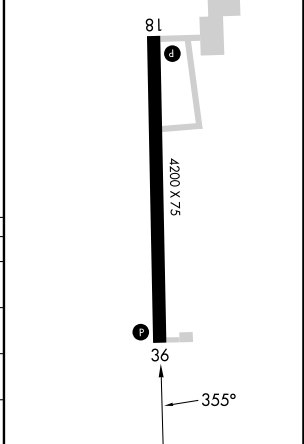
⚠ Baro-VNAV and VDP NA when using Pipestone altimeter setting. For uncompensated Baro-VNAV systems, LNAV/VNAV NA below -17°C or above 54°C. When local altimeter setting not received, use Pipestone altimeter setting: increase LPV DA to 1727 feet; increase LNAV/VNAV DA to 1977 feet and visibility all Cats ¼ SM; increase all MDAs 100 feet and visibility LNAV Cats C/D and Circling Cats B/C ¼ SM.

MISSED APPROACH: Climb to 3300 direct TYIBR and hold.

AWOS-3 119.825	SIOUX FALLS APP CON * 125.8 284.725	UNICOM 122.7 (CTAF) 0
--------------------------	---	---------------------------------



ELEV 1435	TDZE 1433
MIRL Rwy 18-36 0	REIL Rwy 18 and 36 0



CATEGORY	A	B	C	D
LPV DA	1633-1 200 (200-1)			
LNAV/VNAV DA	1883-1 3/8 450 (500-1 3/8)			
LNAV MDA	1840-1 407 (500-1)	1840-1 1/8 407 (500-1 1/8)		
CIRCLING	1940-1 505 (600-1)	2160-1 725 (800-1)	2360-2 3/4 925 (1000-2 3/4)	2360-3 925 (1000-3)

NC-1, 20 FEB 2025 to 20 MAR 2025

NC-1, 20 FEB 2025 to 20 MAR 2025