

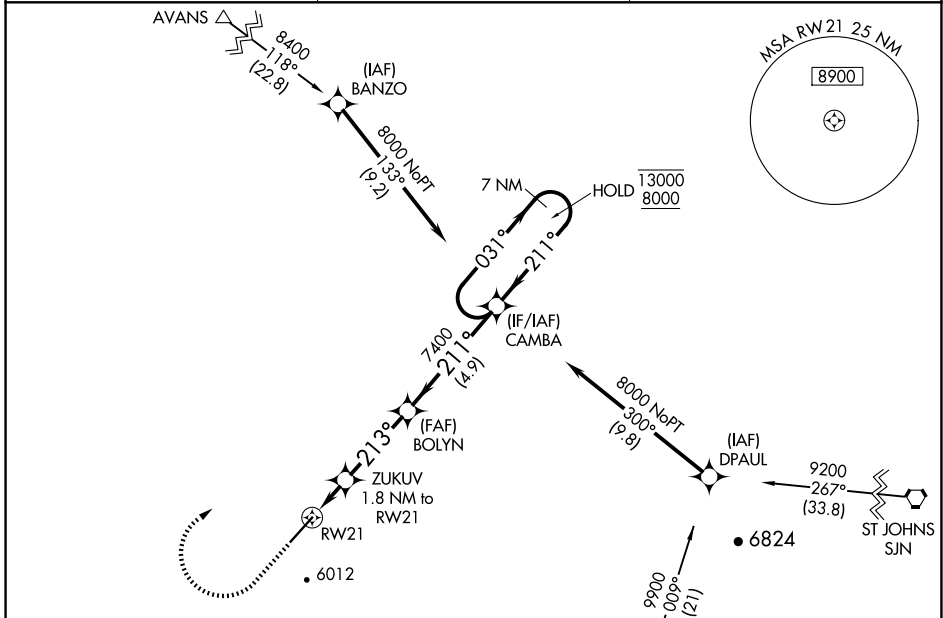
WAAS CH 53344 W21A	APP CRS 213°	Rwy Idg TDZE Apt Elev	7001 5758 5823
--	------------------------	-----------------------------	---

RNAV (GPS) RWY 21

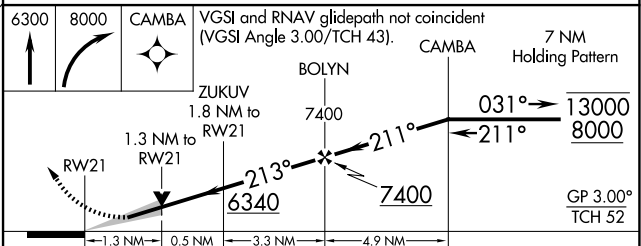
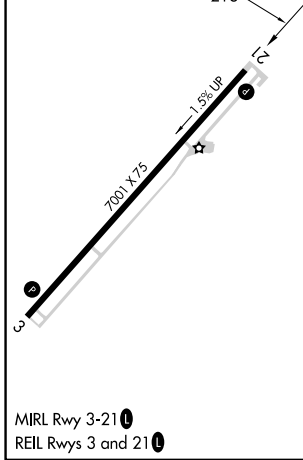
TAYLOR (TYL)

RNP APCH-GPS. When local altimeter setting not received, procedure NA. For uncompensated Baro-VNAV systems, LNAV/VNAV NA below 26°C or above 54°C.	MISSED APPROACH: Climb to 6300 then climbing right turn to 8000 direct CAMBA and hold.
--	--

AWOS-3PT 119.075	ALBUQUERQUE CENTER 132.9 239.05	UNICOM 122.7 (CTAF)
----------------------------	---	-------------------------------



ELEV 5823	TDZE 5758
-----------	-----------



CATEGORY	A	B	C	D
LPV DA	6008-3/4 250 (200-3/4)			
LNAV/VNAV DA	6008-3/4 250 (200-3/4)			
LNAV MDA	6180-1	422 (400-1)	6180-1 1/4	422 (400-1 1/4)
<input checked="" type="checkbox"/> CIRCLING	6320-1 497 (500-1)	6440-1 617 (700-1)	6440-1 3/4 617 (700-1 3/4)	6480-2 657 (700-2)

SW-4, 20 FEB 2025 to 20 MAR 2025

SW-4, 20 FEB 2025 to 20 MAR 2025