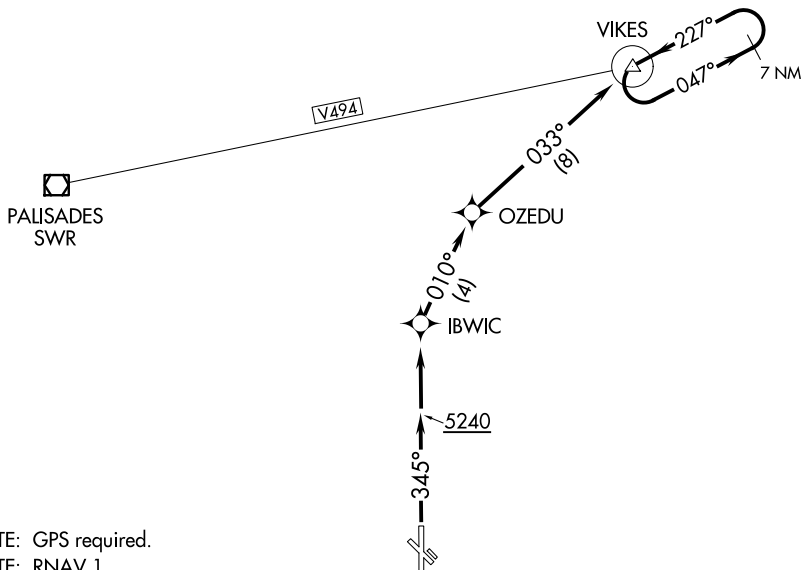


(MINDN2.VIKES) 23222

# MINDEN TWO DEPARTURE (OBSTACLE) (RNAV)

MINDEN-TAHOE (MEV)  
AL-9430 (FAA) MINDEN, NEVADA

RENO TOWER  
118.7 257.8  
NORCAL DEP CON  
119.2 279.55



NOTE: GPS required.  
NOTE: RNAV 1

### TAKEOFF MINIMUMS

Rwys 16, 12, 30: NA - obstacles.

Rwy 34: Standard with a minimum climb of 413' per NM to 7800.

### TAKEOFF OBSTACLE NOTES

Rwy 34: Fence 235' from DER, 302' right of centerline, 7' AGL/4714' MSL.

NOTE: Chart not to scale.

## DEPARTURE ROUTE DESCRIPTION

**TAKEOFF RUNWAY 34:** Climb heading 345° to 5240 then direct IBWIC, then on track 010° to OZEDU, then on track 033° to VIKES, then climb in VIKES holding pattern (hold NE, left turn, 227° inbound) to cross VIKES at or above MEA/MCA for assigned route of flight.

MINDEN TWO DEPARTURE (OBSTACLE) (RNAV)  
(MINDN2.VIKES) 15DEC11

MINDEN, NEVADA  
MINDEN-TAHOE (MEV)

SW-4, 20 FEB 2025 to 20 MAR 2025

SW-4, 20 FEB 2025 to 20 MAR 2025