

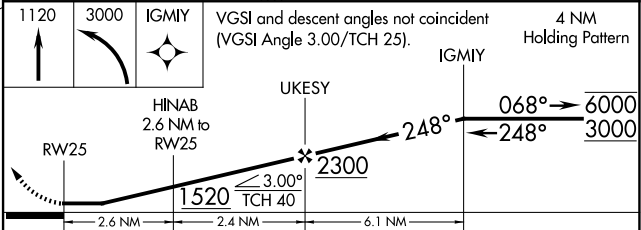
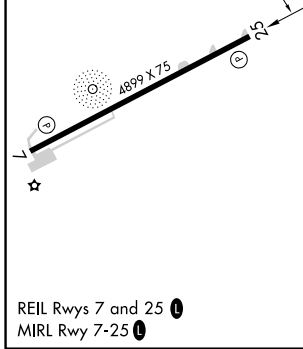
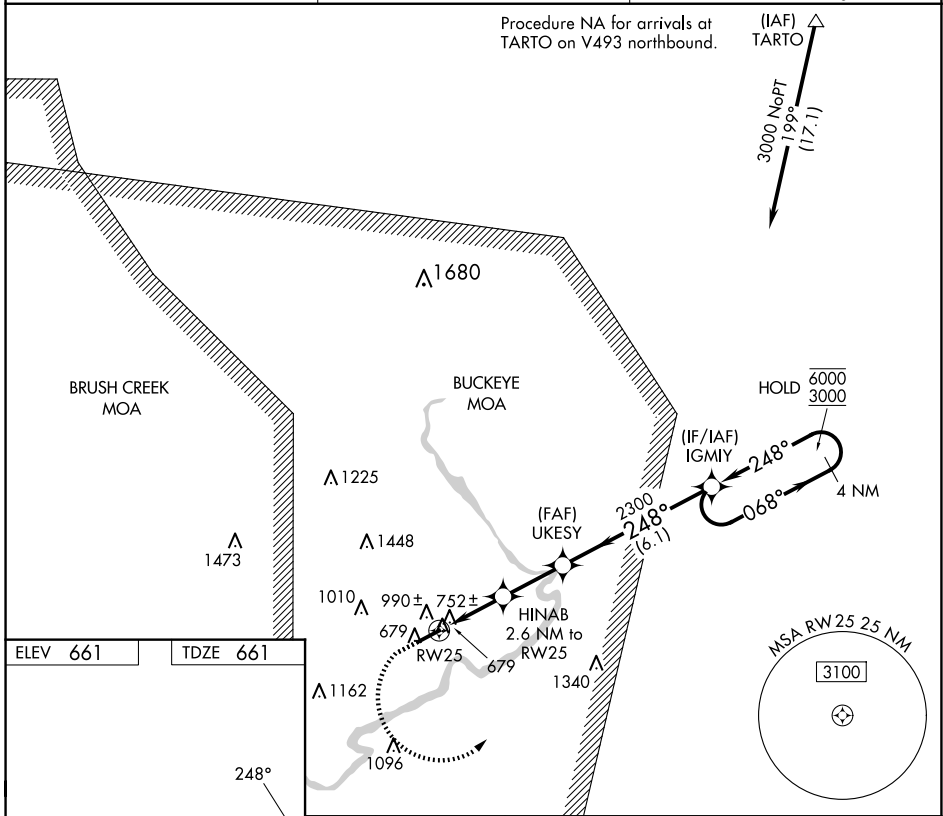
WAAS CH <b>97537</b> <b>W25A</b>	APP CRS <b>248°</b>	Rwy Idg TDZE <b>661</b> Apt Elev <b>661</b>	<b>4899</b> <b>661</b> <b>661</b>
--	------------------------	---	---

# RNAV (GPS) RWY 25

PIKE COUNTY (EOP)

RNP APCH - GPS.	MISSED APPROACH: Climb to 1120 then climbing left turn to 3000 direct IGMYY and hold.
<p>▼ Rwy 25 helicopter visibility reduction below 3/4 SM NA.</p> <p>▲ NA Circling Rwy 7 NA at night.</p> <p>When local altimeter setting not received, use PMH altimeter setting.</p>	

AWOS-3PT <b>121.45</b>	INDIANAPOLIS CENTER <b>135.575 290.5</b>	UNICOM <b>123.0 (CTAF) 0</b>
---------------------------	---	---------------------------------



CATEGORY	A	B	C	D
LP MDA	1060-1	399 (400-1)	1060-1 1/8	399 (400-1 1/8)
LNAV MDA	1260-1	599 (600-1)	1260-1 3/4	599 (600-1 3/4)
◼ CIRCLING	1500-1 1/4 839 (900-1 1/4)	1520-1 1/4 859 (900-1 1/4)	1580-2 3/4 919 (1000-2 3/4)	1700-3 1039 (1100-3)

WAVERLY, OHIO  
Amdt 1C 05SEP24

39°10'N-82°56'W

# RNAV (GPS) RWY 25

EC-2, 20 FEB 2025 to 20 MAR 2025

EC-2, 20 FEB 2025 to 20 MAR 2025