

WAAS CH 56437 W07A	APP CRS 068°	Rwy Idg 4899 TDZE 661 Apt Elev 661
--	------------------------	---

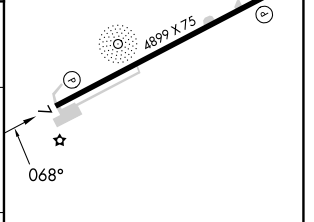
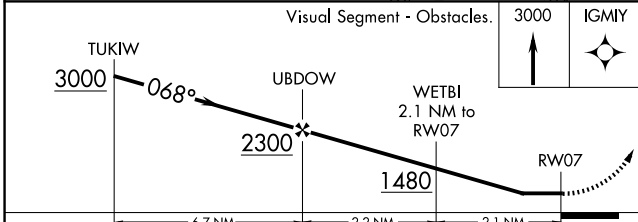
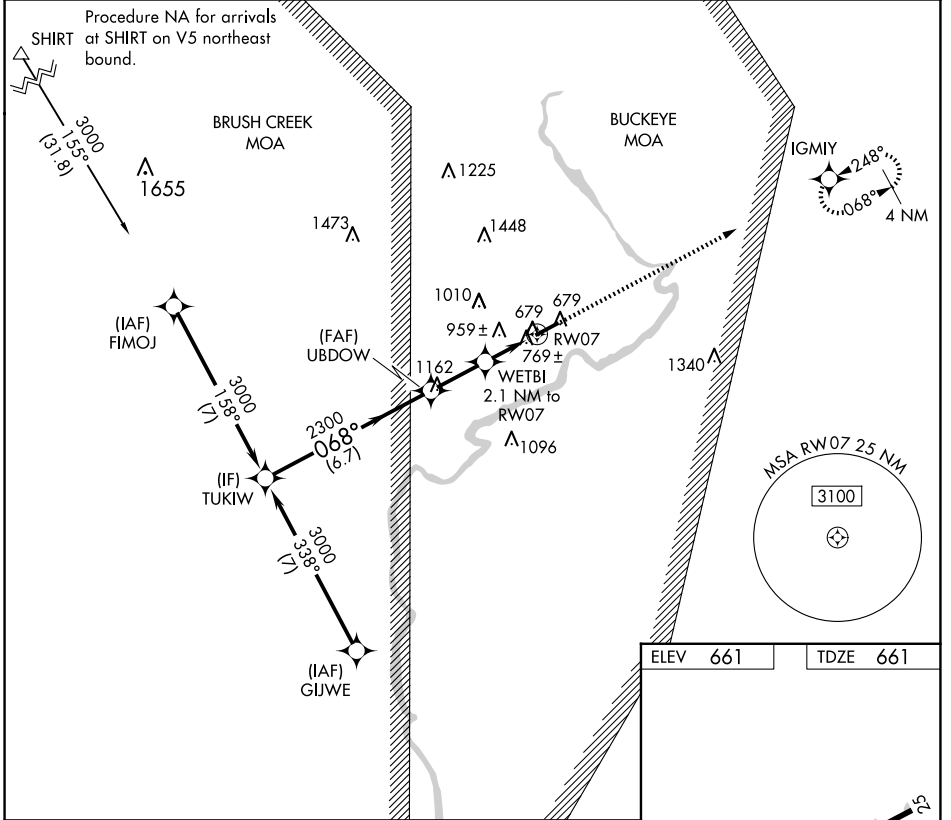
RNAV (GPS) RWY 7

PIKE COUNTY (EOP)

RNP APCH - GPS.
 ⚠ Rwy 7 helicopter visibility reduction below 1 SM NA. When local climeter setting not received, use PMH altimeter setting. Straight-in Rwy 7 NA at night, Circling Rwy 7 NA at night.

MISSED APPROACH: Climb to 3000 direct IGMYY and hold.

AWOS-3PT 121.45	INDIANAPOLIS CENTER 135.575 290.5	UNICOM 123.0 (CTAF) 0
---------------------------	---	---------------------------------



CATEGORY	A	B	C	D
LP MDA	1080-1	419 (500-1)	1080-1 $\frac{1}{8}$	419 (500-1 $\frac{1}{8}$)
LNAV MDA	1340-1	679 (700-1)	1340-1 $\frac{7}{8}$	679 (700-1 $\frac{7}{8}$)
CIRCLING	1500-1 $\frac{1}{4}$ 839 (900-1 $\frac{1}{4}$)	1520-1 $\frac{1}{4}$ 859 (900-1 $\frac{1}{4}$)	1580-2 $\frac{3}{4}$ 919 (1000-2 $\frac{3}{4}$)	1700-3 1039 (1100-3)

ELEV 661 | TDZE 661

REIL Rwy 7 and 25 0
MIRL Rwy 7-25 0

EC-2, 20 FEB 2025 to 20 MAR 2025

EC-2, 20 FEB 2025 to 20 MAR 2025