

WAAS CH 82418 W18A	APP CRS 186°	Rwy Idg TDZE Apt Elev 5700 6763 6763
--	------------------------	--

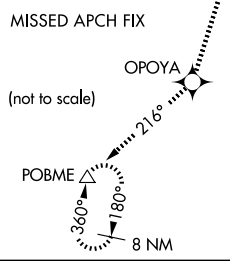
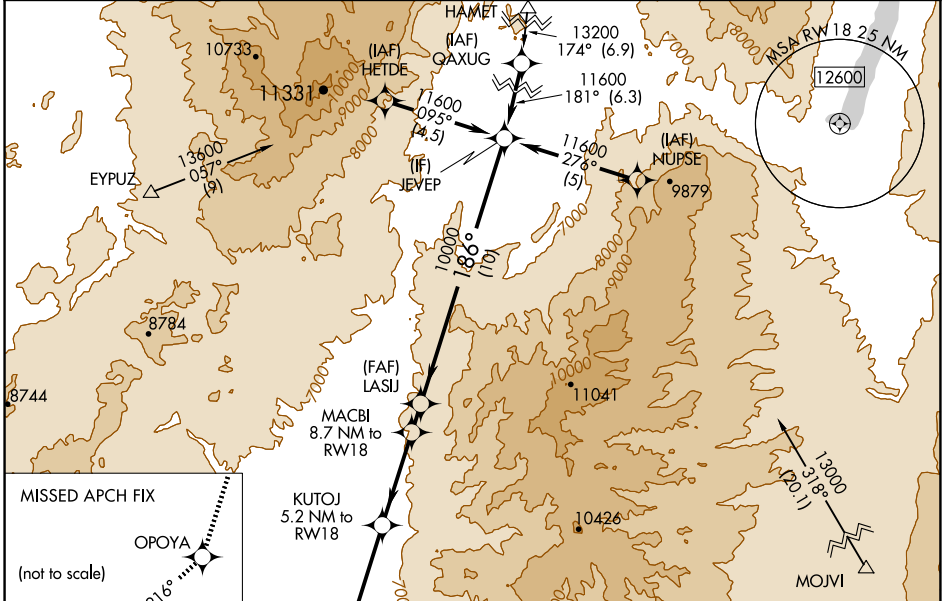
RNAV (GPS) RWY 18

PANGUITCH MUNI (U55)

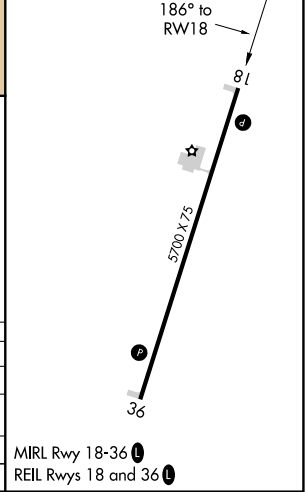
For uncompensated Baro-VNAV systems, LNAV/VNAV NA below -28°C (-18°F) or above 54°C (130°F). DME/DME RNP-0.3 NA. When local altimeter setting not received use Bryce Canyon altimeter setting and increase all DA 149 feet and all MDA 160 feet, increase LPV visibility ¼ mile and increase LNAV visibility and Circling Cat B visibility ¼ mile. Baro-VNAV and VDP NA with Bryce Canyon altimeter setting.

MISSED APPROACH: Climb to 12500 direct OPOYA and on track 216° to POBME and hold, continue climb-in-hold 12500.

AWOS-3 133.125	SALT LAKE CENTER 133.6 269.25	CTAF 122.9
--------------------------	---	----------------------



ELEV 6763	TDZE 6763
-----------	-----------



12500	OPOYA	tr 216°	POBME	JEVEP
*LNAV only.				Procedure Turn NA
		*2.1 NM to RWY 18	KUTOJ 5.2 NM to RWY 18	11600
			MACBI 8.7 NM to RWY 18	9600*
			LASIJ 10000	10000
				GP 3.00° TCH 40
CATEGORY	A	B	C	D
LPV DA	6963-1	200 (200-1)		NA
LNAV/VNAV DA	7331-2	568 (600-2)		NA
LNAV MDA	7460-1	697 (700-1)		NA
CIRCLING	7460-1	697 (700-1)		NA

SW-4, 20 FEB 2025 to 20 MAR 2025

SW-4, 20 FEB 2025 to 20 MAR 2025

MIRL Rwy 18-36
REIL Rwy 18 and 36