

# RNAV (GPS) RWY 24

CALIFORNIA CITY MUNI (L71)

APP CRS	Rwy Idg	<b>6027</b>
<b>227°</b>	TDZE	<b>2429</b>
	Apt Elev	<b>2454</b>

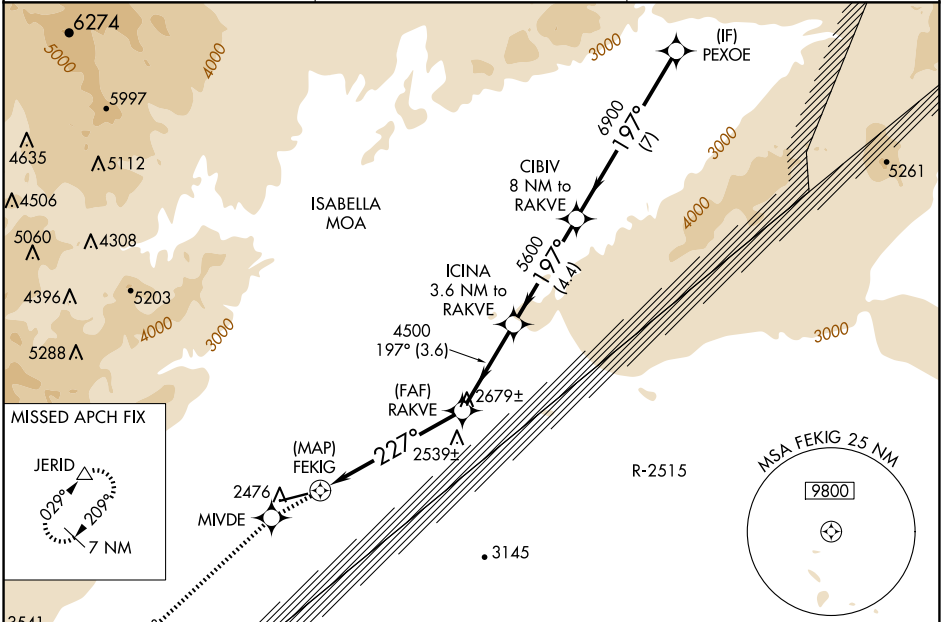
RNP APCH.

▼ If local altimeter setting not received, use Edwards AFB altimeter setting and increase all MDAs 60 feet; if neither received, procedure not authorized.

▲ NA

MISSED APPROACH: Climb to 9000 direct MIVDE and via 213° track to JERID and hold, continue climb-in-hold to 9000.

AWOS-1 <b>120.875</b>	JOSHUA APP CON <b>133.65 348.7</b>	UNICOM <b>122.7 (CTAF) 0</b>
--------------------------	---------------------------------------	---------------------------------



**RADAR REQUIRED**

ELEV 2454 TDZE 2429

9000 MIVDE 213° tr JERID VGSI and descent angles not coincident PEXOE (VGSI Angle 3.00/TCH 40).

ICINA 3.6 NM to RAKVE CIBIV 8 NM to RAKVE

RAKVE 197° 6900

FEKIG ≤ 3.05° TCH 50 4500 5600 Procedure Turn NA

0.5 5.8 NM 3.6 NM 4.4 NM 7 NM

ELEV 2454 TDZE 2429

MRL Rwy 6-24 0

REL Rwy 24 0

CATEGORY	A	B	C	D
LNAV MDA	2820-1 391 (400-1)			NA
CIRCLING	2960-1	506 (600-1)	3080-1¾ 626 (700-1¾)	NA

SW-3, 20 FEB 2025 to 20 MAR 2025

SW-3, 20 FEB 2025 to 20 MAR 2025