

APP CRS 047°	Rwy Idg 6027
	TDZE 2454
	Apt Elev 2454

RNAV (GPS) RWY 6

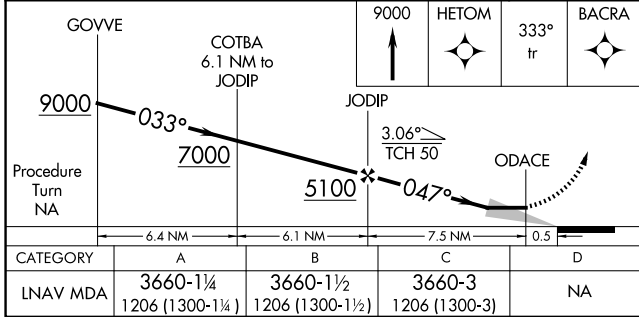
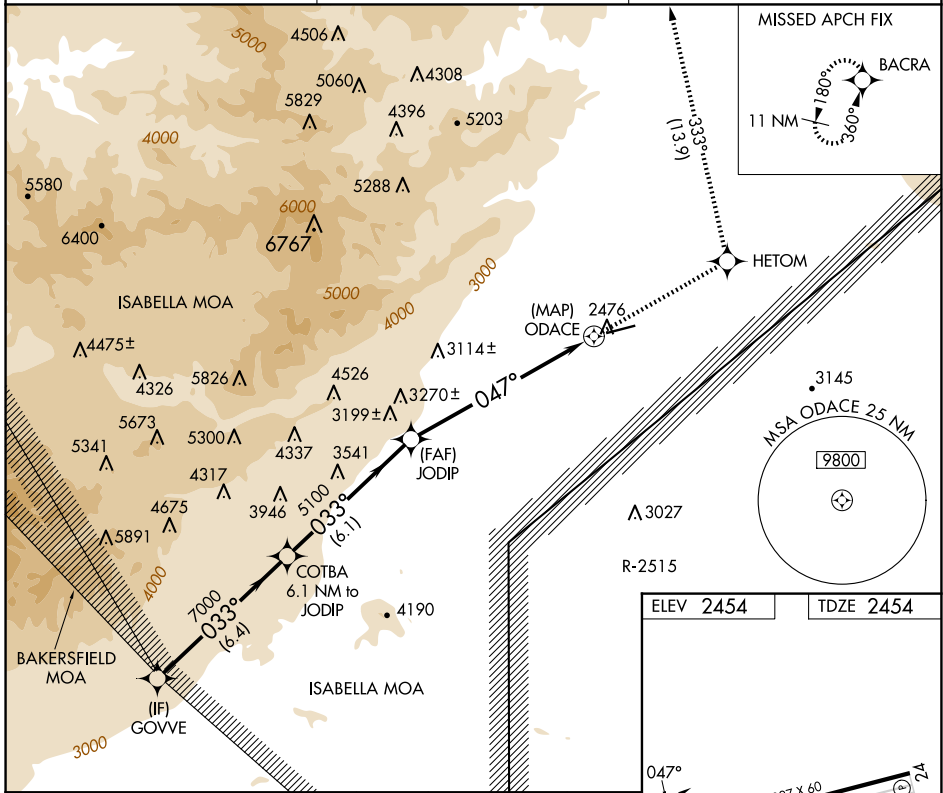
CALIFORNIA CITY MUNI (L71)

RNP APCH.
RADAR required.

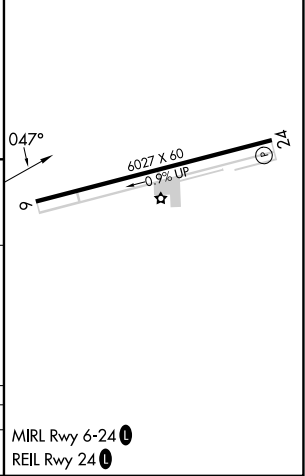
▼ If local altimeter setting not received, use Edwards AFB altimeter setting and increase all MDAs 60 feet; if neither received, procedure not authorized.

MISSED APPROACH: Climb to 9000 direct HETOM and via 333° track to BACRA and hold, continue climb-in-hold to 9000.

AWOS-1 120.875	JOSHUA APP CON 133.65 348.7	UNICOM 122.7 (CTAF)
--------------------------	---------------------------------------	-------------------------------



ELEV 2454	TDZE 2454
-----------	-----------



SW-3, 20 FEB 2025 to 20 MAR 2025

SW-3, 20 FEB 2025 to 20 MAR 2025