

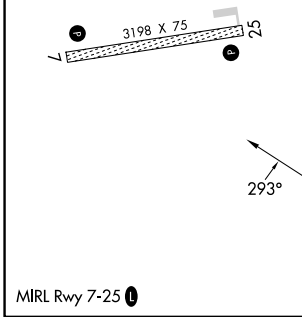
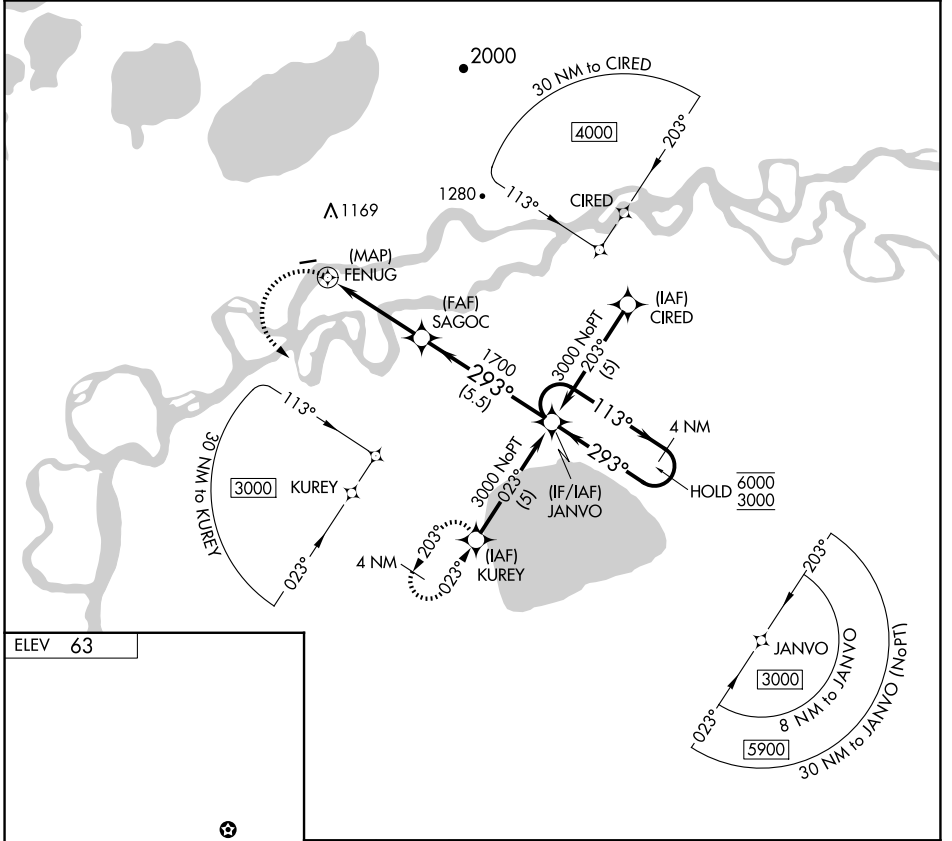
APP CRS <b>293°</b>	Rwy Idg TDZE Apt Elev	<b>N/A</b> <b>N/A</b> <b>63</b>
------------------------	-----------------------------	---------------------------------------

# RNAV (GPS)-A

KALSAG (KLG)(PALG)

RNP APCH - GPS.	MISSED APPROACH: Climbing left turn to 3000 direct KUREY and hold, continue climb-in hold to 3000.
Procedure NA at night. Circling NA north of Rwy 7-25.	

AWOS-3P <b>119.025</b>	ANCHORAGE CENTER <b>118.15 251.05</b>	UNICOM <b>122.8 (CTAF) 0</b>
---------------------------	--	---------------------------------



3000	KUREY	JANVO			
4 NM Holding Pattern		4 NM Holding Pattern			
FENUG		SAGOC		JANVO	
4 NM		5.5 NM		4 NM	
293°		293°		113°	
3000		3000		6000	
CATEGORY	A	B	C	D	
CIRCLING	520-1 457 (500-1)	700-1 637 (700-1)	NA		

AK, 20 FEB 2025 to 17 APR 2025

AK, 20 FEB 2025 to 17 APR 2025