

WAAS CH 87033 W17A	APP CRS 173°	Rwy Idg TDZE Apt Elev	3200 20 20
--	------------------------	-----------------------------	---------------------------------------

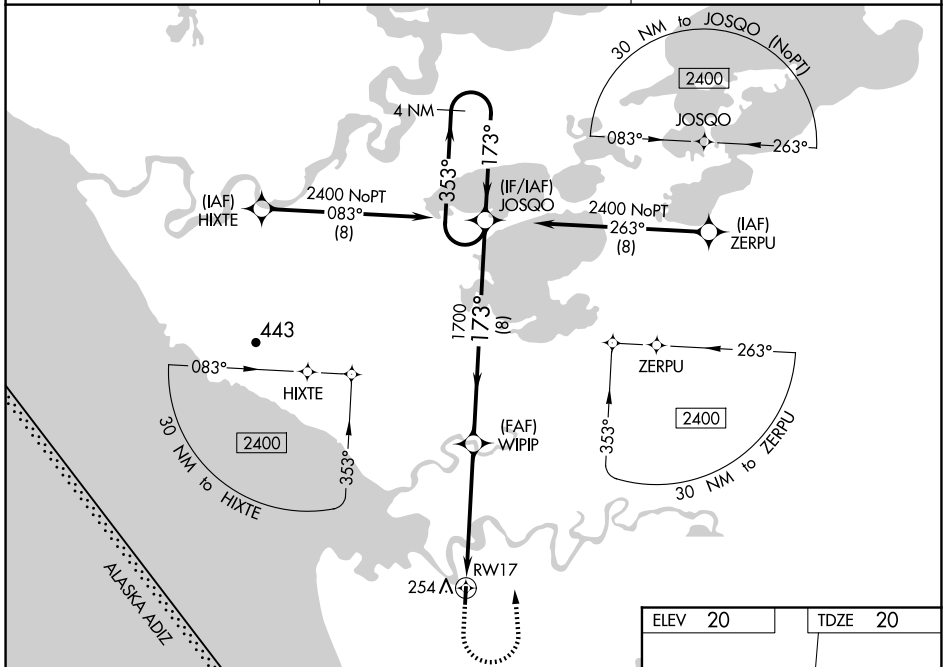
RNAV (GPS) RWY 17

KIPNUK (IIK) (PAKI)

⚠ Baro-VNAV NA when using Toksook Bay altimeter setting. For uncompensated Baro-VNAV systems, LNAV/VNAV NA below -20°C (-4°F) or above 54°C (130°F). DME/DME RNP-0.3 NA. Procedure NA at night. VDP NA when using Toksook Bay altimeter setting. When local altimeter setting not received use Toksook Bay altimeter setting; increase LPV DA to 389 feet and visibility all Cats ¼ SM. Increase LNAV/VNAV DA to 553 feet and visibility all Cats ½ SM. Increase all MDA 120 feet. Increase LNAV Cat C and D visibility to 1¼ SM, Circling Cat C to 2 SM, Cat D to 2¼ SM.

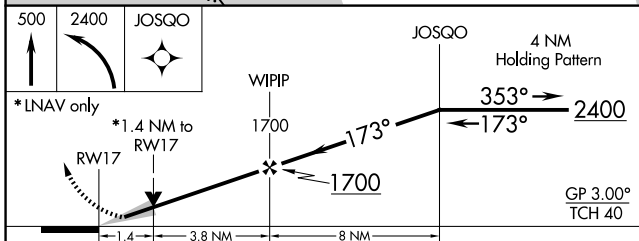
MISSED APPROACH:
Climb to 500 then climbing left turn to 2400 direct JOSQO and hold.

AWOS-3P 118.325	ANCHORAGE CENTER 125.2 372.0	CTAF 122.7 0
---------------------------	--	------------------------



AK, 20 FEB 2025 to 17 APR 2025

AK, 20 FEB 2025 to 17 APR 2025



ELEV 20	TDZE 20
MIRL Rwy 17-35 0	

CATEGORY	A	B	C	D
LPV DA	270-1 250 (300-1)			
LNAV/VNAV DA	434-1⅜ 414 (500-1⅜)			
LNAV MDA	520-1	500 (500-1)	520-1⅜	500 (500-1⅜)
C CIRCLING	580-1	560 (600-1)	580-1½ 560 (600-1½)	580-2 560 (600-2)