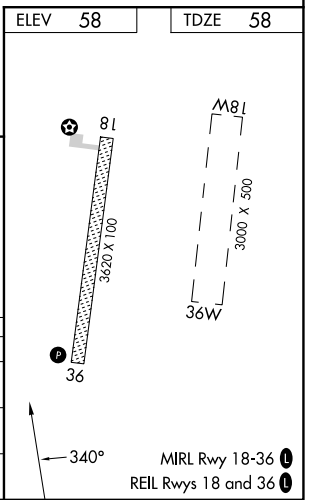
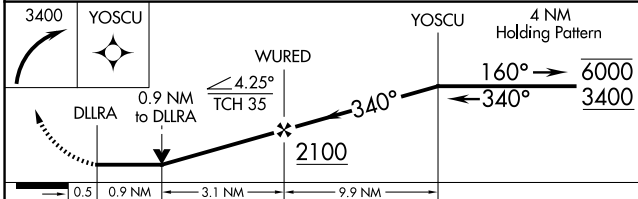
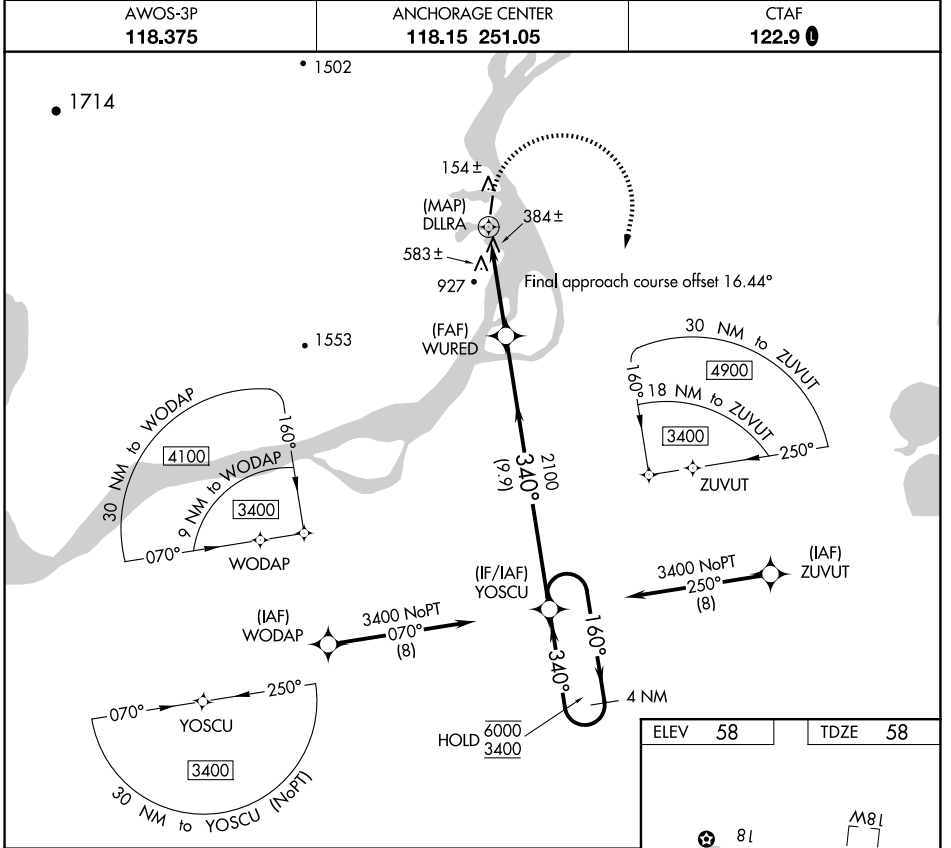


WAAS CH 93942 W36A	APP CRS 340°	Rwy Idg 3620 TDZE 58 Apt Elev 58
--	------------------------	---

RNAV (GPS) RWY 36

RUSSIAN MISSION (RSH)(PARS)

RNP APCH.		<p>▼ Circling Rwy 18 NA at night.</p> <p>⚠ Rwy 36 helicopter visibility reduction below ¾ SM NA.</p> <p>❄ -30°C</p>	MISSED APPROACH: Climbing right turn to 3400 direct YOSCU and hold.
AWOS-3P 118.375	ANCHORAGE CENTER 118.15 251.05	CTAF 122.9	



CATEGORY	A	B	C	D
LP MDA	700-1 642 (700-1)		NA	
LNAV MDA	840-1 782 (800-1)		NA	
CIRCLING	840-1 782 (800-1)	840-1¼ 782 (800-1¼)	1120-3 1062 (1100-3)	1360-3 1302 (1400-3)

AK, 20 FEB 2025 to 17 APR 2025

AK, 20 FEB 2025 to 17 APR 2025