

STIGLER, OKLAHOMA

AL-9467 (FAA)

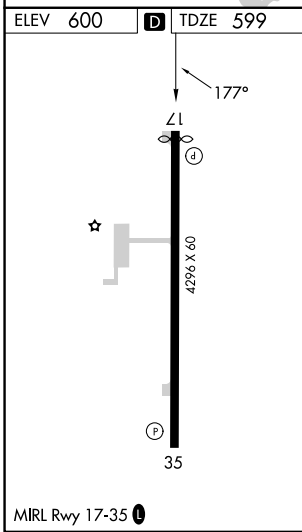
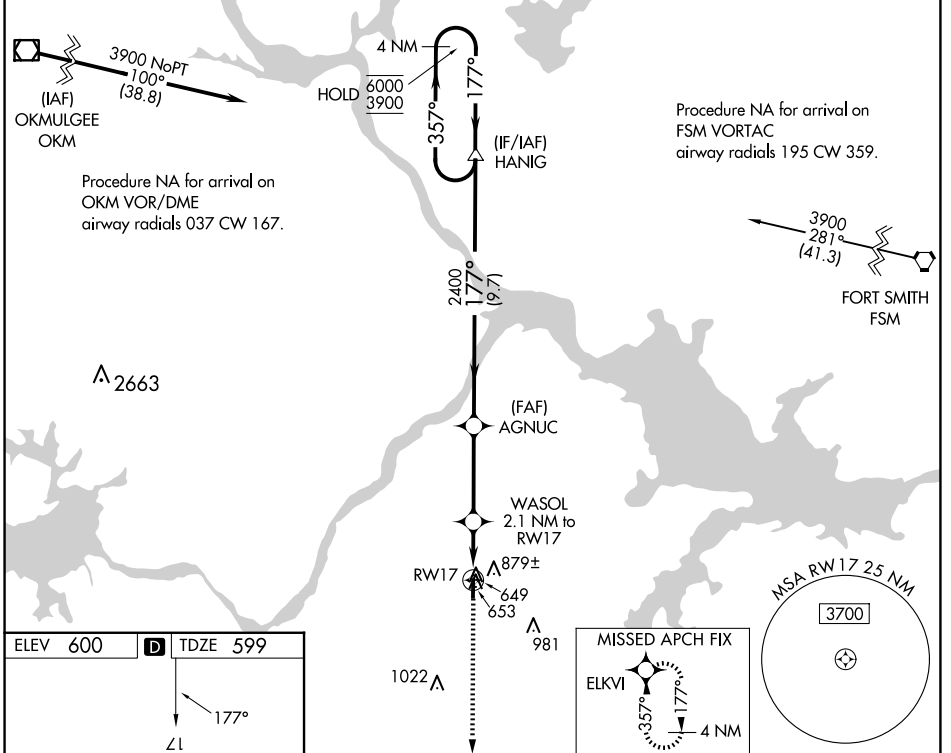
24305

WAAS CH 65822 W17A	APP CRS 177°	Rwy Idg TDZE Apt Elev	4200 599 600
---------------------------------	------------------------	-----------------------------	---

RNAV (GPS) RWY 17

STIGLER RGNL (GZL)

RNP APCH. ▼ Rwy 17 helicopter visibility reduction below 1 SM NA. Procedure NA at night.		MISSED APPROACH: Climb to 3900 direct ELKVI and hold, continue climb-in-hold to 3900.
AWOS-3PT 118.575	FORT WORTH CENTER 132.2 338.35	CTAF 122.90



		AGNUC	HANIG	4 NM Holding Pattern
	WASOL 2.1 NM to RW17	2400	357° → 6000	← 177° 3900
	1300	2100		
	2.1 NM	3.4 NM	9.7 NM	
CATEGORY	A	B	C	D
LP MDA	900-1	301 (300-1)		NA
LNAV MDA	1020-1	421 (500-1)		NA
CIRCLING	1180-1	580 (600-1)		NA

STIGLER, OKLAHOMA
Orig-B 03JAN19

35°17'N-95°06'W

RNAV (GPS) RWY 17

STIGLER RGNL (GZL)

SC-1, 20 FEB 2025 to 20 MAR 2025

SC-1, 20 FEB 2025 to 20 MAR 2025