

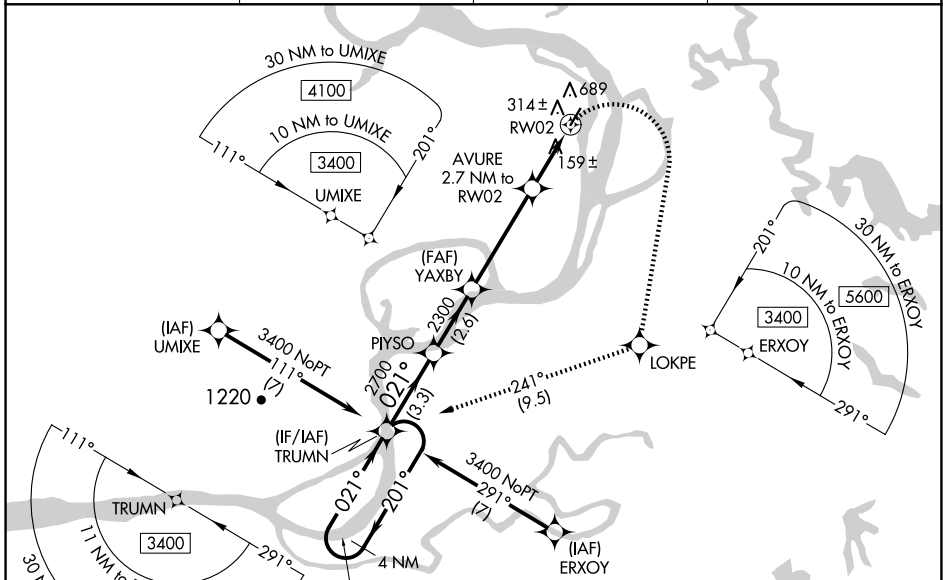
WAAS CH <b>57947</b> <b>W02A</b>	APP CRS <b>021°</b>	Rwy Idg TDZE <b>74</b> Apt Elev <b>75</b>	<b>4000</b>
--	------------------------	---	-------------

# RNAV (GPS) RWY 2

HOLY CROSS (HCA) (PAHC)

RNP APCH - GPS.	<p><b>⚠</b> Circling Rwy 20 NA at night. Circling NA west of Rwy 2-20. Rwy 2 helicopter visibility reduction below <math>\frac{3}{4}</math> SM NA. VDP NA when using Anvik altimeter setting. When local altimeter setting not received, use Anvik altimeter setting and increase all MDAs 120 feet and LNAV visibility Cat B, C and D <math>\frac{1}{2}</math> SM, and LP visibility Cat C and D <math>\frac{3}{8}</math> SM, and Circling all visibilities <math>\frac{1}{2}</math> SM.</p>	<p><b>⚠</b> MISSED APPROACH: Climbing right turn to 3400 direct LOKPE and on track 241° to TRUMN and hold, continue climb-in-hold to 3400.</p>
-----------------	---	--

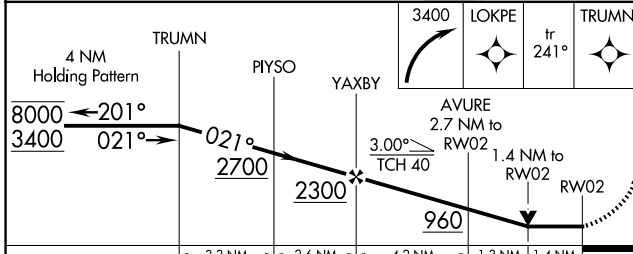
AWOS-3P <b>118.325</b>	ANCHORAGE CENTER <b>118.15 251.05</b>	KENAI RADIO <b>122.45</b>	CTAF <b>122.8</b>
---------------------------	--	------------------------------	----------------------



AK, 20 FEB 2025 to 17 APR 2025

AK, 20 FEB 2025 to 17 APR 2025

ELEV 75	TDZE 74
---------	---------



CATEGORY	A	B	C	D
LP MDA	560-1	486 (500-1)	560-1 $\frac{3}{8}$	486 (500-1 $\frac{3}{8}$ )
LNAV MDA	800-1	726 (800-1)	800-2	726 (800-2)
CIRCLING	800-1	725 (800-1)	800-2 725 (800-2)	800-2 $\frac{1}{4}$ 725 (800-2 $\frac{1}{4}$ )

