

WAAS CH 60948 W20A	APP CRS 201°	Rwy Idg 4000 TDZE 75 Apt Elev 75
--	------------------------	---

RNAV (GPS) RWY 20

HOLY CROSS (HCA)(PAHC)

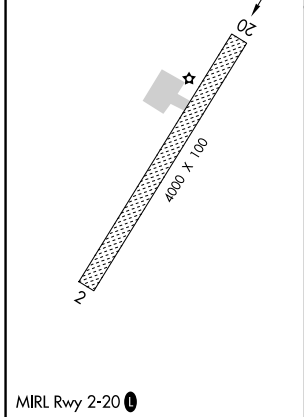
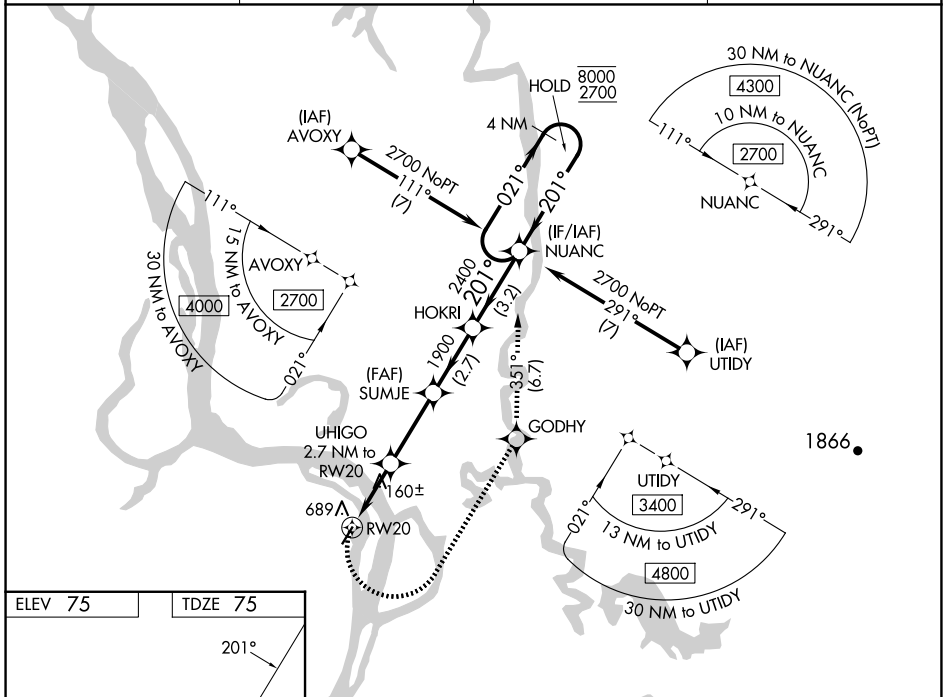
RNP APCH - GPS.

⚠ Circling NA west of Rwy 2-20. Rwy 20 helicopter visibility reduction below 1 SM NA. When local altimeter setting not received, use Anvik altimeter setting and increase all MDAs 120 feet, LNAV all visibilities ½ SM, LP visibilities Cats C and D ¾ SM, and Circling visibilities Cats B, C, and D ½ SM. Straight-in and Circling Rwy 20 NA at night.

❄ -28°C

MISSED APPROACH: Climbing left turn to 2700 direct GODHY and on track 351° to NUANC and hold.

AWOS-3P 118.325	ANCHORAGE CENTER 118.15 251.05	KENAI RADIO 122.45	CTAF 122.8 📍
---------------------------	--	------------------------------	-------------------------------



2700	GODHY	tr 351°	NUANC	NUANC	4 NM Holding Pattern
UHIGO 2.7 NM to RW20		3.00° TCH 40	SUMJE	HOKRI	NUANC
RW20	960	1900	2400	8000	2700
← 2.7 NM		← 3 NM		← 2.7 NM ← 3.2 NM	
CATEGORY	A	B	C	D	
LP MDA	420-1 345 (400-1)				
LNAV MDA	940-1 865 (900-1)	940-1¼ 865 (900-1¼)	940-2½ 865 (900-2½)	865 (900-2½)	
CIRCLING	940-1¼	865 (900-1¼)	940-2½ 865 (900-2½)	940-2¾ 865 (900-2¾)	

AK, 20 FEB 2025 to 17 APR 2025

AK, 20 FEB 2025 to 17 APR 2025